

Product datasheet for **AP52409PU-N**

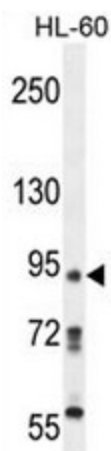
KRI1 (N-term) Rabbit Polyclonal Antibody

Product data:

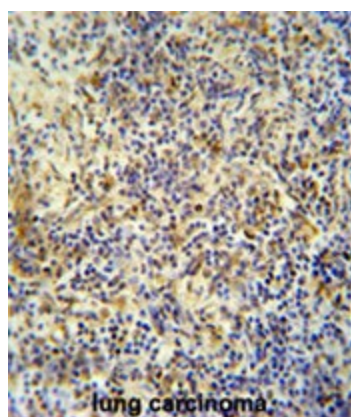
Product Type:	Primary Antibodies
Applications:	IHC, WB
Recommended Dilution:	WB; P; E. The suggested dilution is: ELISA ~ 1:1;000 Western blotting ~ 1:100~500 Immunohistochemistry ~ 1:50~100
Reactivity:	Human
Host:	Rabbit
Isotype:	Ig
Clonality:	Polyclonal
Immunogen:	Immunized with a KLH conjugated synthetic peptide between 12-41 amino acids from the N-terminal region of human KRI1
Formulation:	Purified polyclonal antibody supplied in PBS with 0.09% (W/V) sodium azide. This antibody is purified through a protein A column; followed by peptide affinity purification. State: Aff - Purified State: Liquid purified Ig fraction
Concentration:	lot specific
Conjugation:	Unconjugated
Storage:	Store the antibody undiluted at 2-8°C for one month or (in aliquots) at -20°C for longer. Avoid repeated freezing and thawing.
Stability:	Shelf life: one year from despatch.
Predicted Protein Size:	83252 Da
Gene Name:	Homo sapiens KRI1 homolog (KRI1)
Database Link:	Entrez Gene 65095 Human Q8N9T8
Background:	This gene overlaps with the gene for cysteine endopeptidase AUT-like 4 in a head-to-tail orientation. [provided by RefSeq].
Synonyms:	Protein homolog



[View online »](#)

Product images:

KRI1 Antibody (N-term) (Cat. #AP52409PU-N) western blot analysis in HL-60 cell line lysates (35ug/lane). This demonstrates the KRI1 antibody detected the KRI1 protein (arrow).



KRI1 antibody (N-term) (Cat. #AP52409PU-N) immunohistochemistry analysis in formalin fixed and paraffin embedded human lung carcinoma followed by peroxidase conjugation of the secondary antibody and DAB staining. This data demonstrates the use of the KRI1 antibody (N-term) for immunohistochemistry. Clinical relevance has not been evaluated.