

## Product datasheet for **AP52408PU-N**

### **KREMEN2 (Center) Rabbit Polyclonal Antibody**

#### **Product data:**

Product Type:	Primary Antibodies
Applications:	WB
Recommended Dilution:	<b>ELISA:</b> 1/1000. <b>Western Blot:</b> 1/100 - 1/500.
Reactivity:	Human
Host:	Rabbit
Isotype:	Ig
Clonality:	Polyclonal
Immunogen:	KLH conjugated synthetic peptide between 247-276 amino acids from the Central region of human KREMEN2
Specificity:	This antibody reacts to KREMEN2.
Formulation:	PBS State: Aff - Purified State: Liquid purified Ig fraction Preservative: 0.09% (W/V) sodium azide
Concentration:	lot specific
Purification:	Affinity chromatography on Protein A
Conjugation:	Unconjugated
Storage:	Store the antibody undiluted at 2-8°C for one month or (in aliquots) at -20°C for longer. Avoid repeated freezing and thawing.
Stability:	Shelf life: one year from despatch.
Gene Name:	kringle containing transmembrane protein 2
Database Link:	<a href="#">Entrez Gene 79412 Human</a> <a href="#">Q8NCW0</a>



[View online »](#)

**Background:**

This gene encodes a high-affinity dickkopf homolog 1 (DKK1) transmembrane receptor that functionally cooperates with DKK1 to block wingless (WNT)/beta-catenin signaling. The encoded protein forms a ternary membrane complex with DKK1 and the WNT receptor lipoprotein receptor-related protein 6 (LRP6), and induces rapid endocytosis and removal of LRP6 from the plasma membrane. It contains extracellular kringle, WSC, and CUB domains. Alternatively spliced transcript variants encoding distinct isoforms have been observed for this gene.

**Synonyms:**

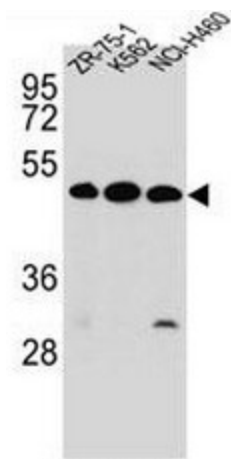
KREMEN2, KRM2, Dickkopf receptor 2

**Note:**

**Molecular Weight:** 48849 Da

**Protein Families:**

Druggable Genome, Transmembrane

**Product images:**

KREMEN2 Antibody (Center) western blot analysis in ZR-75-1, K562, NCI-H460 cell line lysates (35ug/lane). This demonstrates the KREMEN2 antibody detected the KREMEN2 protein (arrow).