

## Product datasheet for **AP52403PU-N**

### Kaptin (KPTN) (Center) Rabbit Polyclonal Antibody

#### Product data:

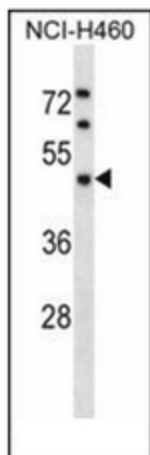
Product Type:	Primary Antibodies
Applications:	WB
Recommended Dilution:	<b>ELISA:</b> 1/1000. <b>Western Blot:</b> 1/100-1/500.
Reactivity:	Human
Host:	Rabbit
Isotype:	Ig
Clonality:	Polyclonal
Immunogen:	KLH conjugated synthetic peptide between 244-273 amino acids from the Central region of Human Kaptin
Specificity:	This antibody recognizes Human Kaptin (Center).
Formulation:	PBS containing 0.09% (W/V) Sodium Azide as preservative State: Aff - Purified State: Liquid purified Ig fraction
Concentration:	lot specific
Purification:	Protein A column, followed by peptide affinity purification
Conjugation:	Unconjugated
Storage:	Store undiluted at 2-8°C for one month or (in aliquots) at -20°C for longer. Avoid repeated freezing and thawing.
Stability:	Shelf life: one year from despatch.
Gene Name:	kaptin (actin binding protein)
Database Link:	<a href="#">Entrez Gene 11133 Human Q9Y664</a>
Background:	KPTN may be involved in actin dynamics. May play a role in producing the sensory apparatus in hair cells. May play a role in actin rearrangements that accompany platelet activation and stereocilia formation.
Synonyms:	KPTN



[View online »](#)

Note: **Molecular Weight:** 48080 Da

**Product images:**



Western blot analysis of Kaptin Antibody (Center) in NCI-H460 cell line lysates (35ug/lane). This demonstrates the KPTN antibody detected the KPTN protein (arrow).