

Product datasheet for **AP52398PU-N**

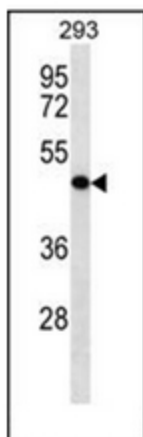
KLRG2 (N-term) Rabbit Polyclonal Antibody

Product data:

Product Type:	Primary Antibodies
Applications:	WB
Recommended Dilution:	ELISA: 1/1000. Western Blot: 1/100-1/500.
Reactivity:	Human
Host:	Rabbit
Isotype:	Ig
Clonality:	Polyclonal
Immunogen:	KLH conjugated synthetic peptide between 19-49 amino acids from the N-terminal region of human KLRG2
Specificity:	This antibody recognizes Human KLRG2 (N-term).
Formulation:	PBS containing 0.09% (W/V) Sodium Azide as preservative State: Aff - Purified State: Liquid purified Ig fraction
Concentration:	lot specific
Purification:	Protein A column, followed by peptide affinity purification
Conjugation:	Unconjugated
Storage:	Store undiluted at 2-8°C for one month or (in aliquots) at -20°C for longer. Avoid repeated freezing and thawing.
Stability:	Shelf life: one year from despatch.
Gene Name:	killer cell lectin like receptor G2
Database Link:	Entrez Gene 346689 Human A4D1S0
Synonyms:	Killer cell lectin-like receptor subfamily G member 2, CLEC15B
Note:	Molecular Weight: 42823 Da
Protein Families:	Druggable Genome, Transmembrane



[View online »](#)

Product images:

Western blot analysis of KLRG2 Antibody (N-term) in 293 cell line lysates (35ug/lane). This demonstrates the KLRG2 antibody detected the KLRG2 protein (arrow).