

Product datasheet for **AP52395PU-N**

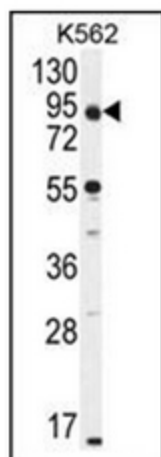
KLRAQ (PPP1R21) (Center) Rabbit Polyclonal Antibody

Product data:

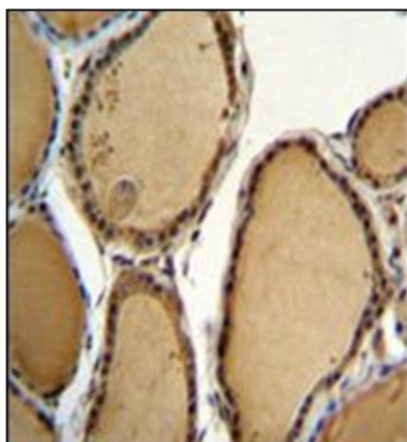
Product Type:	Primary Antibodies
Applications:	IHC, WB
Recommended Dilution:	ELISA: 1/1000. Western Blot: 1/100-1/500. Immunohistochemistry on Paraffin Sections: 1/50-1/100.
Reactivity:	Human
Host:	Rabbit
Isotype:	Ig
Clonality:	Polyclonal
Immunogen:	KLH conjugated synthetic peptide between 214-243 amino acids from the Central region of Human CCDC128
Specificity:	This antibody recognizes Human CCDC128 (Center).
Formulation:	PBS containing 0.09% (W/V) Sodium Azide as preservative State: Aff - Purified State: Liquid purified Ig fraction
Concentration:	lot specific
Purification:	Protein A column, followed by peptide affinity purification
Conjugation:	Unconjugated
Storage:	Store undiluted at 2-8°C for one month or (in aliquots) at -20°C for longer. Avoid repeated freezing and thawing.
Stability:	Shelf life: one year from despatch.
Gene Name:	protein phosphatase 1 regulatory subunit 21
Database Link:	Entrez Gene 129285 Human Q6ZMI0
Synonyms:	KLRAQ1
Note:	Molecular Weight: 88314 Da



[View online »](#)

Product images:

Western blot analysis of CCDC128 Antibody (Center) in K562 cell line lysates (35ug/lane).



Immunohistochemistry analysis in formalin fixed and paraffin embedded human thyroid tissue reacted with CCDC128 Antibody (Center) followed by peroxidase conjugation of the secondary antibody and DAB staining.