

Product datasheet for **AP52394PU-N**

Kallikrein 9 (KLK9) (Center) Rabbit Polyclonal Antibody

Product data:

Product Type:	Primary Antibodies
Applications:	IHC, WB
Recommended Dilution:	ELISA: 1/1000. Western Blot: 1/100-1/500. Immunohistochemistry on Paraffin Sections: 1/10-1/50.
Reactivity:	Human
Host:	Rabbit
Isotype:	Ig
Clonality:	Polyclonal
Immunogen:	KLH conjugated synthetic peptide between 81-111 amino acids from the Central region of Human KLK9 / Kallikrein-9
Specificity:	This antibody recognizes Human KLK19 / Kallikrein-19 (Center).
Formulation:	PBS containing 0.09% (W/V) Sodium Azide as preservative State: Aff - Purified State: Liquid purified Ig fraction
Concentration:	lot specific
Purification:	Protein A column, followed by peptide affinity purification
Conjugation:	Unconjugated
Storage:	Store undiluted at 2-8°C for one month or (in aliquots) at -20°C for longer. Avoid repeated freezing and thawing.
Stability:	Shelf life: one year from despatch.
Gene Name:	kallikrein related peptidase 9
Database Link:	Entrez Gene 284366 Human Q9UKQ9
Background:	The protein encoded by this gene is a kallikrein-related serine protease. This gene is activated by steroid hormones in a human breast cancer cell line, making it a good marker for cancer detection. The encoded protein is found primarily in the cytoplasm.
Synonyms:	Kallikrein-like protein 3, KLK-L3, KLKL3

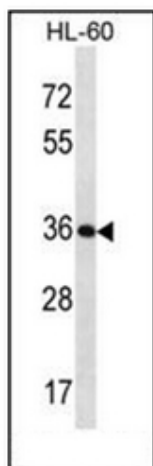


[View online »](#)

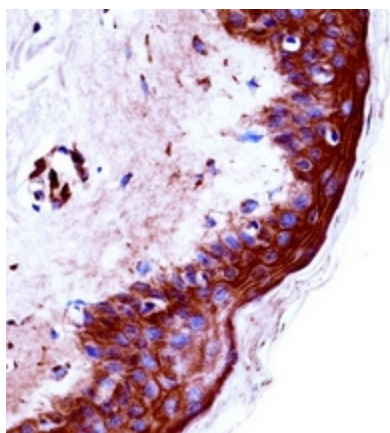
Note: **Molecular Weight:** 27513 Da

Protein Families: Druggable Genome, Protease, Secreted Protein

Product images:



Western blot analysis of KLK9 / Kallikrein-9 Antibody (Center) in HL-60 cell line lysates (35ug/lane). This demonstrates the KLK9 antibody detected the KLK9 protein (arrow).



Immunohistochemistry analysis in formalin fixed and paraffin embedded human skin tissue reacted with KLK9 / Kallikrein-9 Antibody (Center) followed by peroxidase conjugation of the secondary antibody and DAB staining.