

## Product datasheet for **AP52393PU-N**

### Kallikrein 15 (KLK15) (Center) Rabbit Polyclonal Antibody

#### Product data:

Product Type:	Primary Antibodies
Applications:	IHC, WB
Recommended Dilution:	<b>ELISA:</b> 1/1000. <b>Western Blot:</b> 1/100-1/500. <b>Immunohistochemistry on Paraffin Sections:</b> 1/10-1/50.
Reactivity:	Human
Host:	Rabbit
Isotype:	Ig
Clonality:	Polyclonal
Immunogen:	KLH conjugated synthetic peptide between 79-106 amino acids from the Central region of Human KLK15 / Kallikrein-15
Specificity:	This antibody recognizes Human KLK15 / Kallikrein-15 (Center).
Formulation:	PBS containing 0.09% (W/V) Sodium Azide as preservative State: Aff - Purified State: Liquid purified Ig fraction
Concentration:	lot specific
Purification:	Protein A column, followed by peptide affinity purification
Conjugation:	Unconjugated
Storage:	Store undiluted at 2-8°C for one month or (in aliquots) at -20°C for longer. Avoid repeated freezing and thawing.
Stability:	Shelf life: one year from despatch.
Gene Name:	kallikrein related peptidase 15
Database Link:	<a href="#">Entrez Gene 55554 Human Q9H2R5</a>



[View online »](#)

**Background:**

Kallikreins are a subgroup of serine proteases having diverse physiological functions. Growing evidence suggests that many kallikreins are implicated in carcinogenesis and some have potential as novel cancer and other disease biomarkers. This gene is one of the fifteen kallikrein subfamily members located in a cluster on chromosome 19. In prostate cancer, this gene has increased expression, which indicates its possible use as a diagnostic or prognostic marker for prostate cancer. The gene contains multiple polyadenylation sites and alternative splicing results in multiple transcript variants encoding distinct isoforms.

**Synonyms:**

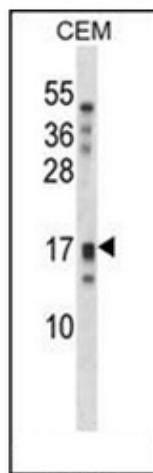
ACO protease

**Note:**

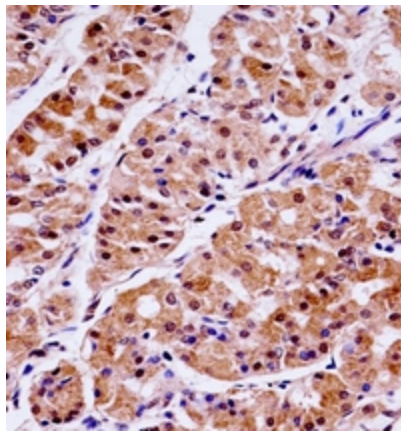
**Molecular Weight:** 18kd Isoform 3. 28087 Da

**Protein Families:**

Druggable Genome, Protease, Secreted Protein

**Product images:**


Western blot analysis of KLK15 / Kallikrein-15 Antibody (Center) in CEM cell line lysates (35ug/lane). This demonstrates the KLK15 antibody detected the KLK15 protein (arrow).



Immunohistochemistry analysis in formalin fixed and paraffin embedded human stomach tissue reacted with KLK15 / Kallikrein-15 Antibody (Center) followed by peroxidase conjugation of the secondary antibody and DAB staining.