

Product datasheet for **AP52392PU-N**

Kallikrein 14 (KLK14) (N-term) Rabbit Polyclonal Antibody

Product data:

Product Type:	Primary Antibodies
Applications:	WB
Recommended Dilution:	ELISA: 1/1000. Western Blot: 1/100-1/500.
Reactivity:	Human
Host:	Rabbit
Isotype:	Ig
Clonality:	Polyclonal
Immunogen:	KLH conjugated synthetic peptide between 14-44 amino acids from the N-terminal region of Human KLK14 / Kallikrein-14
Specificity:	This antibody recognizes Human KLK14 / Kallikrein-14 (N-term).
Formulation:	PBS containing 0.09% (W/V) Sodium Azide as preservative State: Aff - Purified State: Liquid purified Ig fraction
Concentration:	lot specific
Purification:	Protein A column, followed by peptide affinity purification
Conjugation:	Unconjugated
Storage:	Store undiluted at 2-8°C for one month or (in aliquots) at -20°C for longer. Avoid repeated freezing and thawing.
Stability:	Shelf life: one year from despatch.
Gene Name:	kallikrein related peptidase 14
Database Link:	Entrez Gene 43847 Human Q9P0G3
Background:	Kallikreins are a subgroup of serine proteases having diverse physiological functions. Growing evidence suggests that many kallikreins are implicated in carcinogenesis and some have potential as novel cancer and other disease biomarkers. This gene is one of the fifteen kallikrein subfamily members located in a cluster on chromosome 19. An additional transcript variant has been described but its full length nature has not been determined.



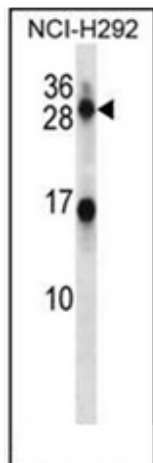
[View online »](#)

Synonyms: KLKL6, KLK-L6, Kallikrein-like protein 6

Note: **Molecular Weight:** 29122 Da

Protein Families: Druggable Genome, Protease, Secreted Protein

Product images:



Western blot analysis of KLK14 Antibody (N-term) in NCI-H292 cell line lysates (35ug/lane). This demonstrates the KLK14 antibody detected the KLK14 protein (arrow).