

## Product datasheet for **AP52391PU-N**

### Kallikrein 12 (KLK12) (Center) Rabbit Polyclonal Antibody

#### Product data:

Product Type:	Primary Antibodies
Applications:	WB
Recommended Dilution:	<b>ELISA:</b> 1/1000. <b>Western Blot:</b> 1/1000.
Reactivity:	Human
Host:	Rabbit
Isotype:	Ig
Clonality:	Polyclonal
Immunogen:	KLH conjugated synthetic peptide between 84-113 amino acids from the Central region of Human KLK12 / Kallikrein-12
Specificity:	This antibody recognizes Human KLK12 / Kallikrein-12 (Center).
Formulation:	PBS containing 0.09% (W/V) Sodium Azide as preservative State: Aff - Purified State: Liquid purified Ig fraction
Concentration:	lot specific
Purification:	Protein A column, followed by peptide affinity purification
Conjugation:	Unconjugated
Storage:	Store undiluted at 2-8°C for one month or (in aliquots) at -20°C for longer. Avoid repeated freezing and thawing.
Stability:	Shelf life: one year from despatch.
Gene Name:	kallikrein related peptidase 12
Database Link:	<a href="#">Entrez Gene 43849 Human Q9UKR0</a>



[View online »](#)

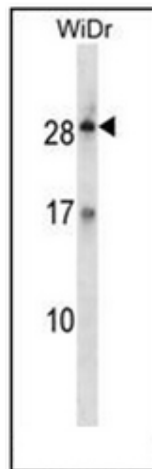
**Background:** Kallikreins are a subgroup of serine proteases having diverse physiological functions. Growing evidence suggests that many kallikreins are implicated in carcinogenesis and some have potential as novel cancer and other disease biomarkers. This gene is one of the fifteen kallikrein subfamily members located in a cluster on chromosome 19. Alternate splicing of this gene results in three transcript variants encoding different isoforms. [provided by RefSeq].

**Synonyms:** KLK5, KLK-L5, Kallikrein-like protein 5

**Note:** **Molecular Weight:** 26734 Da

**Protein Families:** Druggable Genome, Protease, Secreted Protein

**Product images:**



Western blot analysis of KLK12 / Kallikrein-12 Antibody (Center) in WiDr cell line lysates (35ug/lane). This demonstrates the KLK12 antibody detected the KLK12 protein (arrow).