

Product datasheet for **AP52389PU-N**

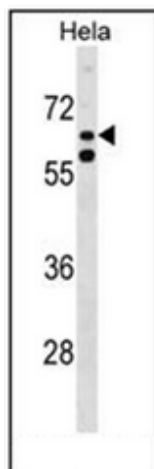
KLHL38 (N-term) Rabbit Polyclonal Antibody

Product data:

Product Type:	Primary Antibodies
Applications:	WB
Recommended Dilution:	ELISA: 1/1000. Western Blot: 1/100-1/500.
Reactivity:	Human
Host:	Rabbit
Isotype:	Ig
Clonality:	Polyclonal
Immunogen:	KLH conjugated synthetic peptide between 75-104 amino acids from the N-terminal region of Human KLHL38
Specificity:	This antibody recognizes Human KLHL38 (N-term).
Formulation:	PBS containing 0.09% (W/V) Sodium Azide as preservative State: Aff - Purified State: Liquid purified Ig fraction
Concentration:	lot specific
Purification:	Protein A column, followed by peptide affinity purification
Conjugation:	Unconjugated
Storage:	Store undiluted at 2-8°C for one month or (in aliquots) at -20°C for longer. Avoid repeated freezing and thawing.
Stability:	Shelf life: one year from despatch.
Gene Name:	kelch like family member 38
Database Link:	Entrez Gene 340359 Human Q2WGI6
Synonyms:	Kelch-like protein 38,C8orfK36
Note:	Molecular Weight: 65541 Da



[View online »](#)

Product images:

Western blot analysis of KLHL38 Antibody (N-term) in HeLa cell line lysates (35ug/lane). This demonstrates the KLHL38 antibody detected the KLHL38 protein (arrow).