

Product datasheet for **AP52388PU-N**

KLHL35 (C-term) Rabbit Polyclonal Antibody

Product data:

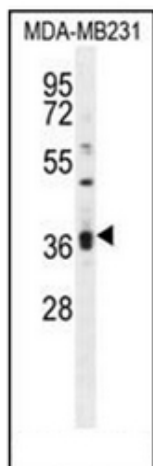
Product Type:	Primary Antibodies
Applications:	IHC, WB
Recommended Dilution:	ELISA: 1/1000. Western Blot: 1/100-1/500. Immunohistochemistry on Paraffin Sections: 1/10-1/50.
Reactivity:	Human
Host:	Rabbit
Isotype:	Ig
Clonality:	Polyclonal
Immunogen:	KLH conjugated synthetic peptide between 308-336 amino acids from the C-terminal region of human KLHL35
Specificity:	This antibody recognizes Human KLHL35 (C-term).
Formulation:	PBS containing 0.09% (W/V) Sodium Azide as preservative State: Aff - Purified State: Liquid purified Ig fraction
Concentration:	lot specific
Purification:	Protein A column, followed by peptide affinity purification
Conjugation:	Unconjugated
Storage:	Store undiluted at 2-8°C for one month or (in aliquots) at -20°C for longer. Avoid repeated freezing and thawing.
Stability:	Shelf life: one year from despatch.
Gene Name:	kelch like family member 35
Database Link:	Entrez Gene 283212 Human Q6PF15
Background:	KLHL35 contains 1 BACK (BTB/Kelch associated) domain and 6 Kelch repeats. The specific function of KLHL35 remains unknown.
Synonyms:	Kelch-like protein 35



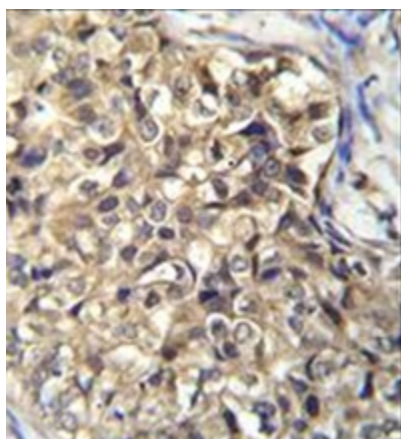
[View online »](#)

Note: **Molecular Weight:** 40026 Da

Product images:



Western blot analysis of KLHL35 Antibody (C-term) in MDA-MB231 cell line lysates (35ug/lane). This demonstrates the KLHL35 antibody detected the KLHL35 protein (arrow).



Immunohistochemistry analysis in formalin fixed and paraffin embedded human breast carcinoma reacted with KLHL35 Antibody (C-term) followed by peroxidase conjugation of the secondary antibody and DAB staining.