

## Product datasheet for **AP52383PU-N**

### KLHDC4 (Center) Rabbit Polyclonal Antibody

#### Product data:

Product Type:	Primary Antibodies
Applications:	WB
Recommended Dilution:	<b>ELISA:</b> 1/1000. <b>Western Blot:</b> 1/100-1/500.
Reactivity:	Human
Host:	Rabbit
Isotype:	Ig
Clonality:	Polyclonal
Immunogen:	KLH conjugated synthetic peptide between 236-265 amino acids from the Central region of human KLHDC4
Specificity:	This antibody recognizes Human KLHDC4 (Center).
Formulation:	PBS containing 0.09% (W/V) Sodium Azide as preservative State: Aff - Purified State: Liquid purified Ig fraction
Concentration:	lot specific
Purification:	Protein A column, followed by peptide affinity purification
Conjugation:	Unconjugated
Storage:	Store undiluted at 2-8°C for one month or (in aliquots) at -20°C for longer. Avoid repeated freezing and thawing.
Stability:	Shelf life: one year from despatch.
Gene Name:	kelch domain containing 4
Database Link:	<a href="#">Entrez Gene 54758 Human Q8TBB5</a>
Background:	Kelch proteins (and Kelch-like proteins) are proteins that have repeated kelch domains. Most Kelch proteins also have a BTB (defn) domain. Each kelch domain forms the blade of a propellar structure, with the repeated kelch domains forming a Beta-propellar. The structure of this Beta-propellar is known but the function is not characterised. KLHDC4 contains six Kelch repeats. There are three named isoforms.

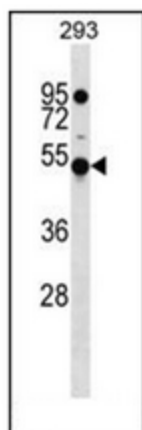


[View online »](#)

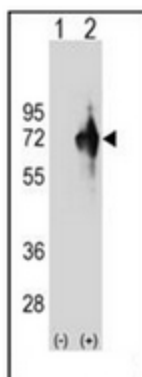
**Synonyms:** Kelch domain-containing protein 4

**Note:** **Molecular Weight:** 57892 Da

**Product images:**



Western blot analysis of KLHDC4 Antibody (Center) in 293 cell line lysates (35ug/lane). This demonstrates the KLHDC4 antibody detected the KLHDC4 protein (arrow).



Western blot analysis of KLHDC4 (arrow) using KLHDC4 Antibody (Center). 293 cell lysates (2 ug/lane) either nontransfected (Lane 1) or transiently transfected (Lane 2) with the KLHDC4 gene.