

Product datasheet for **AP52377PU-N**

KLC2 (C-term) Rabbit Polyclonal Antibody

Product data:

Product Type:	Primary Antibodies
Applications:	FC, IHC, WB
Recommended Dilution:	Western Blot: 1/1000. Flow Cytometry: 1/10-1/50. Immunohistochemistry on Paraffin Sections: 1/50-1/100.
Reactivity:	Human, Mouse
Host:	Rabbit
Isotype:	Ig
Clonality:	Polyclonal
Immunogen:	KLH conjugated synthetic peptide between 403 - 432 amino acids from the C-terminal region of Human KLC2.
Specificity:	This antibody recognizes Human and Mouse KLC2 (C-term).
Formulation:	PBS State: Aff - Purified State: Liquid purified Ig fraction Preservative: 0.09% (W/V) Sodium Azide
Concentration:	lot specific
Purification:	Protein A column, followed by peptide affinity purification
Conjugation:	Unconjugated
Storage:	Store undiluted at 2-8°C for one month or (in aliquots) at -20°C for longer. Avoid repeated freezing and thawing.
Stability:	Shelf life: one year from despatch.
Gene Name:	kinesin light chain 2
Database Link:	Entrez Gene 64837 Human Q9H0B6
Background:	Kinesin is a molecular motor that generates ATP-dependent movement of vesicles and organelles along microtubules. Kinesin consists of 2 light chains, such as KLC2, and 2 heavy chains (see KIF5B; MIM 602809) in a 1:1 stoichiometric ratio



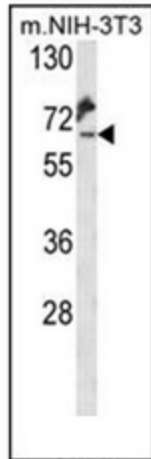
[View online »](#)

Synonyms: KLC2, KLC 2, Kinesin light chain 2

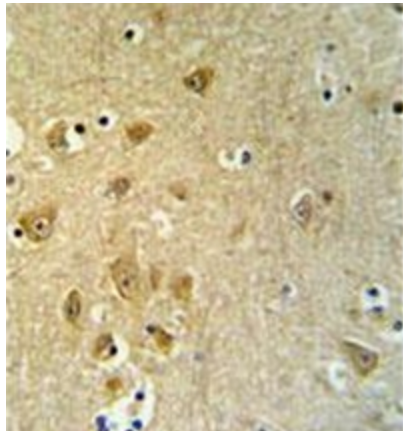
Note: **Molecular Weight:** 68935 Da

Protein Families: Druggable Genome

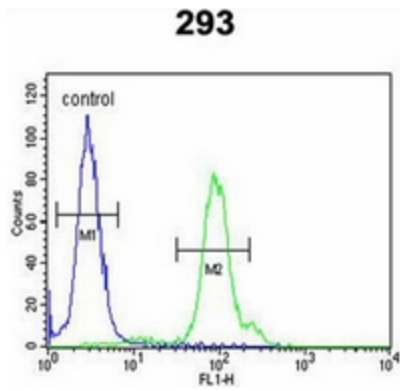
Product images:



Western blot analysis of KLC2 Antibody (C-Term) in Mouse NIH-3T3 cell line lysates (35ug/lane). KLC2 (arrow) was detected using the purified Pab.



Formalin fixed and paraffin embedded brain tissue stained with KLC2 Antibody (C-Term) followed by peroxidase conjugation of the secondary antibody and DAB staining



Flow cytometric analysis of 293 cells using KLC2 Antibody (C-Term) (right histogram) compared to a negative control cell (left histogram). FITC-conjugated goat-anti-rabbit secondary antibodies were used for the analysis.