

Product datasheet for **AP52374PU-N**

KIR3DL3 (Center) Rabbit Polyclonal Antibody

Product data:

Product Type:	Primary Antibodies
Applications:	FC, IHC, WB
Recommended Dilution:	ELISA: 1/1000. Western Blot: 1/100-1/500. Flow Cytometry: 1/10-1/50. Immunohistochemistry on Paraffin Sections: 1/50-1/100.
Reactivity:	Human
Host:	Rabbit
Isotype:	Ig
Clonality:	Polyclonal
Immunogen:	KLH conjugated synthetic peptide between 138~167 amino acids from the Center region of human KIR3DL3
Specificity:	This antibody recognizes Human KIR3DL3 (Center).
Formulation:	PBS containing 0.09% (W/V) Sodium Azide as preservative State: Aff - Purified State: Liquid purified Ig fraction
Concentration:	lot specific
Purification:	Protein A column, followed by peptide affinity purification
Conjugation:	Unconjugated
Storage:	Store undiluted at 2-8°C for one month or (in aliquots) at -20°C for longer. Avoid repeated freezing and thawing.
Stability:	Shelf life: one year from despatch.
Database Link:	Entrez Gene 115653 Human Q8N743
Background:	KIR3DL3 is transmembrane glycoproteins expressed by natural killer cells and subsets of T cells. This protein are polymorphic and highly homologous and they are found in a cluster on chromosome 19q13.4 within the 1 Mb leukocyte receptor complex (LRC).



[View online »](#)

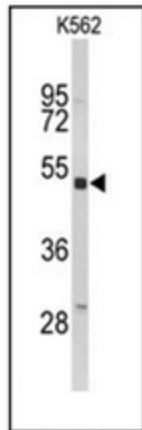
Synonyms: CD_antigen=CD158z, Flags: Precursor, CD158 antigen-like family member Z, Killer cell inhibitory receptor 1, Killer cell immunoglobulin-like receptor 3DL3, KIRC1, KIR3DL7, CD158Z

Note: **Molecular Weight:** 44928 Da

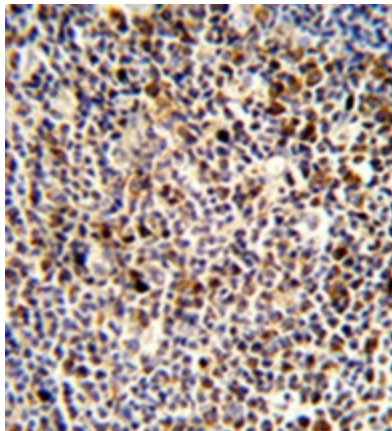
Protein Families: Transmembrane

Protein Pathways: Antigen processing and presentation

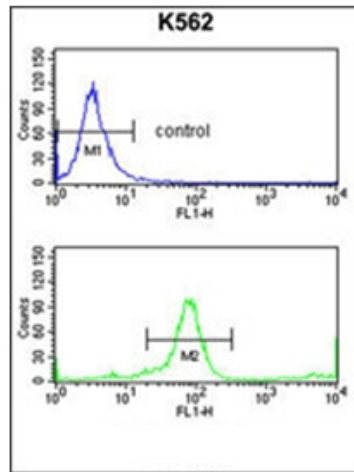
Product images:



Western blot analysis of KIR3DL3 Antibody (Center) in K562 cell line lysates (35ug/lane). KIR3DL3 (arrow) was detected using the purified Pab.



Formalin-fixed and paraffin-embedded human tonsil reacted with KIR3DL3 Antibody (Center), which was peroxidase conjugated to the secondary antibody, followed by DAB staining. This data demonstrates the use of this antibody for immunohistochemistry; clinical relevance has not been evaluated.



Flow cytometry analysis of K562 cells using KIR3DL3 Antibody (Center) (bottom histogram) compared to a negative control cell (top histogram). FITC-conjugated goat-anti-rabbit secondary antibodies were used for the analysis.