

Product datasheet for **AP52370PU-N**

KIR2DL4 (C-term) Rabbit Polyclonal Antibody

Product data:

Product Type:	Primary Antibodies
Applications:	FC, IHC, WB
Recommended Dilution:	ELISA: 1/1000. Western Blot: 1/100-1/500. Flow Cytometry: 1/10-1/50. Immunohistochemistry on Paraffin Sections: 1/50-1/100.
Reactivity:	Human
Host:	Rabbit
Isotype:	Ig
Clonality:	Polyclonal
Immunogen:	KLH conjugated synthetic peptide between 302~332 amino acids from the C-terminal region of human CD158d / KIR2DL4
Specificity:	This antibody recognizes Human CD158d / KIR2DL4 (C-term).
Formulation:	PBS containing 0.09% (W/V) Sodium Azide as preservative State: Aff - Purified State: Liquid purified Ig fraction
Concentration:	lot specific
Purification:	Protein A column, followed by peptide affinity purification
Conjugation:	Unconjugated
Storage:	Store undiluted at 2-8°C for one month or (in aliquots) at -20°C for longer. Avoid repeated freezing and thawing.
Stability:	Shelf life: one year from despatch.
Gene Name:	killer cell immunoglobulin like receptor, two Ig domains and long cytoplasmic tail 4
Database Link:	Entrez Gene 3805 Human Q99706



[View online »](#)

Background: KIR2DL4 is killer cell immunoglobulin-like receptors (KIRs) which are transmembrane glycoproteins expressed by natural killer cells and subsets of T cells. The KIR genes are polymorphic and highly homologous and they are found in a cluster on chromosome 19q13.4 within the 1 Mb leukocyte receptor complex (LRC).

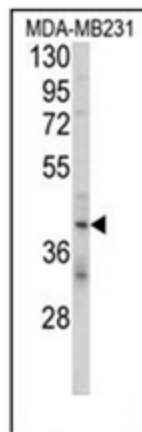
Synonyms: KIR103AS, G9P

Note: **Molecular Weight:** 41528 Da

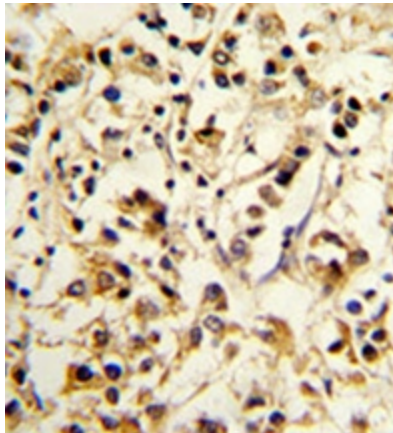
Protein Families: Transmembrane

Protein Pathways: Antigen processing and presentation, Natural killer cell mediated cytotoxicity

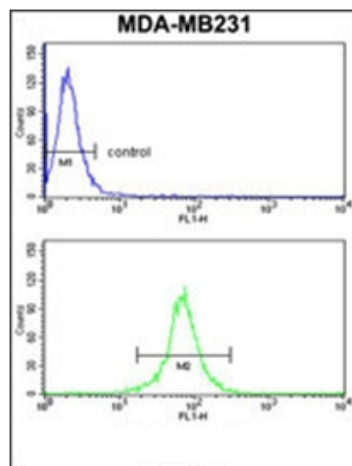
Product images:



Western blot analysis of CD158d / KIR2DL4 Antibody (C-term) in MDA-MB231 cell line lysates (35ug/lane). KIR2DL4 (arrow) was detected using the purified Pab.



Formalin-fixed and paraffin-embedded human breast carcinoma reacted with CD158d / KIR2DL4 Antibody (C-term), which was peroxidase-conjugated to the secondary antibody, followed by DAB staining. This data demonstrates the use of this antibody for immunohistochemistry; clinical relevance has not been evaluated.



Flow cytometry analysis of MDA-MB231 cells using CD158d / KIR2DL4 Antibody (C-term) (bottom histogram) compared to a negative control cell (top histogram). FITC-conjugated goat-anti-rabbit secondary antibodies were used for the analysis.