

Product datasheet for **AP52369PU-N**

KLLN (C-term) Rabbit Polyclonal Antibody

Product data:

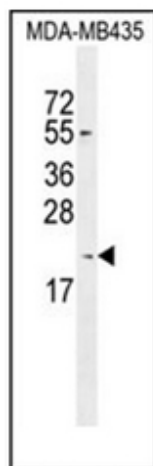
Product Type:	Primary Antibodies
Applications:	WB
Recommended Dilution:	ELISA: 1/1000. Western Blot: 1/100-1/500.
Reactivity:	Human
Host:	Rabbit
Isotype:	Ig
Clonality:	Polyclonal
Immunogen:	KLH conjugated synthetic peptide between 143-171 amino acids from the C-terminal region of human KILLIN
Specificity:	This antibody recognizes Human KILLIN (C-term).
Formulation:	PBS containing 0.09% (W/V) Sodium Azide as preservative State: Aff - Purified State: Liquid purified Ig fraction
Concentration:	lot specific
Purification:	Protein A column, followed by peptide affinity purification
Conjugation:	Unconjugated
Storage:	Store undiluted at 2-8°C for one month or (in aliquots) at -20°C for longer. Avoid repeated freezing and thawing.
Stability:	Shelf life: one year from despatch.
Gene Name:	killin, p53-regulated DNA replication inhibitor
Database Link:	Entrez Gene 100144748 Human B2CW77
Background:	DNA-binding protein involved in S phase checkpoint control-coupled apoptosis by mediating TP53/p53-induced apoptosis. Has the ability to inhibit DNA synthesis and S phase arrest coupled to apoptosis. Has affinity to both double-and single-stranded DNA.
Synonyms:	KLLN



[View online »](#)

Note: **Molecular Weight:** 19958 Da

Product images:



Western blot analysis of KILLIN Antibody (C-term) in MDA-MB435 cell line lysates (35ug/lane). This demonstrates the KILLIN antibody detected the KILLIN protein (arrow).