

Product datasheet for **AP52367PU-N**

KIF6 (N-term) Rabbit Polyclonal Antibody

Product data:

Product Type:	Primary Antibodies
Applications:	WB
Recommended Dilution:	ELISA: 1/1000. Western Blot: 1/100-1/500.
Reactivity:	Human, Mouse
Host:	Rabbit
Isotype:	Ig
Clonality:	Polyclonal
Immunogen:	KLH conjugated synthetic peptide between 41~70 amino acids from the N-terminal region of human KIF6
Specificity:	This antibody recognizes Human and Mouse KIF6 (N-term).
Formulation:	PBS containing 0.09% (W/V) Sodium Azide as preservative State: Aff - Purified State: Liquid purified Ig fraction
Concentration:	lot specific
Purification:	Protein A column, followed by peptide affinity purification
Conjugation:	Unconjugated
Storage:	Store undiluted at 2-8°C for one month or (in aliquots) at -20°C for longer. Avoid repeated freezing and thawing.
Stability:	Shelf life: one year from despatch.
Gene Name:	kinesin family member 6
Database Link:	Entrez Gene 221458 Human Q6ZMV9
Background:	KIF6 belongs to the kinesin-like protein family. There are four named isoforms. The KIF6 719Arg variant has been associated with an increased risk of coronary disease and an increased response to statin therapy.
Synonyms:	KIF6, C6orf102, Kinesin-like protein KIF6

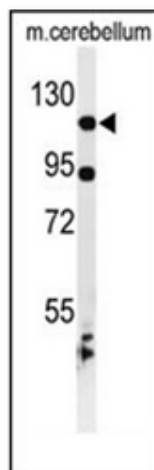


[View online »](#)

Note: **Molecular Weight:** 92569 Da

Protein Families: Druggable Genome

Product images:



Western blot analysis of KIF6 Antibody (N-term) in mouse cerebellum tissue lysates (35ug/lane). KIF6 (arrow) was detected using the purified Pab.