

## Product datasheet for **AP52366PU-N**

### Kinesin 5C (KIF5C) Rabbit Polyclonal Antibody

#### Product data:

Product Type:	Primary Antibodies
Applications:	IHC, WB
Recommended Dilution:	<b>ELISA:</b> 1/1000. <b>Western blotting:</b> 1/100-1/500. <b>Immunohistochemistry on Paraffin Sections:</b> 1/50-1/100.
Reactivity:	Human, Mouse
Host:	Rabbit
Isotype:	Ig
Clonality:	Polyclonal
Immunogen:	KLH conjugated synthetic peptide selected from Human KIF5C
Specificity:	This antibody is specific for Kif5C-2
Formulation:	PBS State: Aff - Purified State: Liquid purified Ig fraction Preservative: 0.09% Sodium Azide
Concentration:	lot specific
Purification:	Protein A Chromatography followed by peptide affinity purification
Conjugation:	Unconjugated
Storage:	Store undiluted at 2-8°C for one month or (in aliquots) at -20°C for longer. Avoid repeated freezing and thawing.
Stability:	Shelf life: one year from despatch.
Predicted Protein Size:	109495 Da
Gene Name:	kinesin family member 5C
Database Link:	<a href="#">Entrez Gene 16574 Mouse</a> <a href="#">Entrez Gene 3800 Human</a> <a href="#">O60282</a>



[View online »](#)

**Background:**

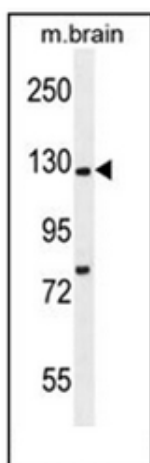
Kinesins are a superfamily of microtubule-associated motor proteins involved in a variety of cellular processes including membranous organelle transport and cell division. Kinesin has been found in a variety of organisms and cell types and is subject to spatial and temporal regulation. These proteins have a modular structure including a conserved motor domain of approximately 350 amino acids, which is responsible for microtubule binding and ATP hydrolysis. In addition to the motor domain, subfamily members share common domain organization, exhibit sequence similarity, motility properties, and cellular functions outside of the motor domain. There are currently three known Kinesin 5 family members denoted as A, B, and C. Kinesin 5A and kinesin 5C appear to be exclusively neuronal, whereas kinesin 5B appears to be ubiquitous in its expression.

**Synonyms:**

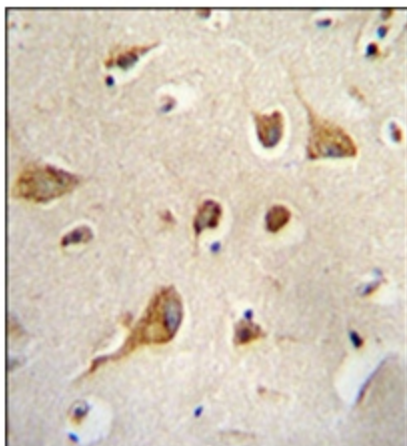
KIF5C, KIAA0531, NKHC2, Kinesin heavy chain isoform 5C, Kinesin heavy chain neuron-specific 2

**Protein Families:**

Druggable Genome

**Product images:**

Western blot analysis in Mouse brain tissue lysates (35ug/lane) using Kif5C-2 Antibody. This demonstrates the Kif5C-2 antibody detected the Kif5C-2 protein (arrow).



Formalin Fixed, Paraffin Embedded Human brain tissue stained with Kif5C-2 Antibody followed by peroxidase conjugation of the secondary antibody and DAB staining. This data demonstrates the use of Kif5C-2 Antibody for immunohistochemistry. Clinical relevance has not been evaluated.