

Product datasheet for **AP52364PU-N**

KIF18A (C-term) Rabbit Polyclonal Antibody

Product data:

Product Type:	Primary Antibodies
Applications:	WB
Recommended Dilution:	ELISA: 1/1000. Western Blot: 1/100-1/500.
Reactivity:	Human
Host:	Rabbit
Isotype:	Ig
Clonality:	Polyclonal
Immunogen:	KLH conjugated synthetic peptide between 643-671 amino acids from the C-terminal region of human KIF18A
Specificity:	This antibody recognizes Human KIF18A (C-term).
Formulation:	PBS containing 0.09% (W/V) Sodium Azide as preservative State: Aff - Purified State: Liquid purified Ig fraction
Concentration:	lot specific
Purification:	Protein A column, followed by peptide affinity purification
Conjugation:	Unconjugated
Storage:	Store undiluted at 2-8°C for one month or (in aliquots) at -20°C for longer. Avoid repeated freezing and thawing.
Stability:	Shelf life: one year from despatch.
Gene Name:	kinesin family member 18A
Database Link:	Entrez Gene 81930 Human Q8NI77
Background:	KIF18A is a member of the kinesin superfamily of microtubule-associated molecular motors (see MIM 148760) that use hydrolysis of ATP to produce force and movement along microtubules (Luboshits and Benayahu, 2005 [PubMed 15878648]). [supplied by OMIM].
Synonyms:	KIF18A, Kinesin-like protein KIF18A, Marrow stromal KIF18A, MS-KIF18A

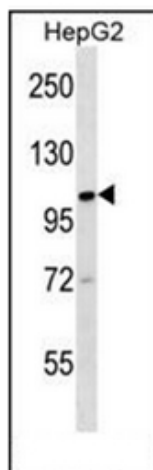


[View online »](#)

Note: **Molecular Weight:** 102281 Da

Protein Families: Druggable Genome

Product images:



Western blot analysis of KIF18A Antibody (C-term) in HepG2 cell line lysates (35ug/lane). This demonstrates the KIF18A antibody detected the KIF18A protein (arrow).