

Product datasheet for **AP52362PU-N**

KIDINS220 (C-term) Rabbit Polyclonal Antibody

Product data:

Product Type:	Primary Antibodies
Applications:	WB
Recommended Dilution:	ELISA: 1/1000. Western Blot: 1/100-1/500.
Reactivity:	Human
Host:	Rabbit
Isotype:	Ig
Clonality:	Polyclonal
Immunogen:	KLH conjugated synthetic peptide between 1517-1547 amino acids from the C-terminal region of Human ARMS / KIDINS220
Specificity:	This antibody recognizes Human ARMS / KIDINS220 (C-term).
Formulation:	PBS containing 0.09% (W/V) Sodium Azide as preservative State: Aff - Purified State: Liquid purified Ig fraction
Concentration:	lot specific
Purification:	Protein A column, followed by peptide affinity purification
Conjugation:	Unconjugated
Storage:	Store undiluted at 2-8°C for one month or (in aliquots) at -20°C for longer. Avoid repeated freezing and thawing.
Stability:	Shelf life: one year from despatch.
Gene Name:	kinase D-interacting substrate 220kDa
Database Link:	Entrez Gene 57498 Human Q9ULH0



[View online »](#)

Background: KIDINS220 promotes a prolonged MAP-kinase signaling by neurotrophins through activation of a Rap1-dependent mechanism. Provides a docking site for the CRKL-C3G complex, resulting in Rap1-dependent sustained ERK activation. May play an important role in regulating postsynaptic signal transduction through the syntrophin-mediated localization of receptor tyrosine kinases such as EPHA4. In cooperation with SNTA1 can enhance EPHA4-induced JAK/STAT activation. May play a role in neurotrophin-and ephrin-mediated neuronal outgrowth and in axon guidance during neural development and in neuronal regeneration (By similarity). Modulates stress-induced apoptosis of melanoma cells via regulation of the MEK/ERK signaling pathway.

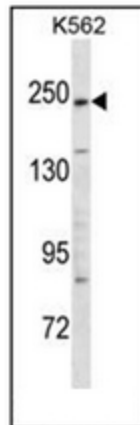
Synonyms: KIAA1250

Note: **Molecular Weight:** 196542 Da

Protein Families: Druggable Genome, Transmembrane

Protein Pathways: Neurotrophin signaling pathway

Product images:



Western blot analysis of ARMS / KIDINS220 Antibody (C-term) in K562 cell line lysates (35ug/lane). This demonstrates the KIDINS220 antibody detected the KIDINS220 protein (arrow).