

## Product datasheet for **AP52356PU-N**

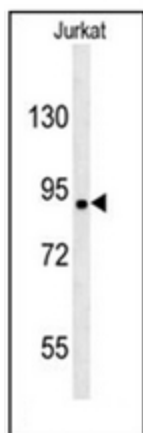
### **FAM190A (CCSER1) (C-term) Rabbit Polyclonal Antibody**

#### **Product data:**

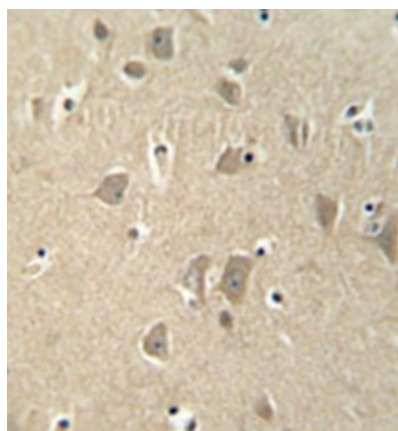
Product Type:	Primary Antibodies
Applications:	IHC, WB
Recommended Dilution:	<b>ELISA:</b> 1/1000. <b>Western Blot:</b> 1/100-1/500. <b>Immunohistochemistry on Paraffin Sections:</b> 1/10-1/50.
Reactivity:	Human
Host:	Rabbit
Isotype:	Ig
Clonality:	Polyclonal
Immunogen:	KLH conjugated synthetic peptide between 787-816 amino acids from the C-terminal region of human KIAA1680
Specificity:	This antibody recognizes Human KIAA1680 (C-term).
Formulation:	PBS containing 0.09% (W/V) Sodium Azide as preservative State: Aff - Purified State: Liquid purified Ig fraction
Concentration:	lot specific
Purification:	Protein A column, followed by peptide affinity purification
Conjugation:	Unconjugated
Storage:	Store undiluted at 2-8°C for one month or (in aliquots) at -20°C for longer. Avoid repeated freezing and thawing.
Stability:	Shelf life: one year from despatch.
Gene Name:	Homo sapiens coiled-coil serine rich protein 1 (CCSER1), transcript variant 1
Database Link:	<a href="#">Entrez Gene 401145 Human Q9C0I3</a>
Synonyms:	KIAA1680
Note:	<b>Molecular Weight:</b> 99510 Da



[View online »](#)

**Product images:**

Western blot analysis of KIAA1680 Antibody (C-term) in Jurkat cell line lysates (35ug/lane). This demonstrates the KIAA1680 antibody detected the KIAA1680 protein (arrow).



Immunohistochemistry analysis in formalin fixed and paraffin embedded human brain tissue reacted with KIAA1680 Antibody (C-term), which was peroxidase conjugated to the secondary antibody and followed by DAB staining.