

Product datasheet for **AP52355PU-N**

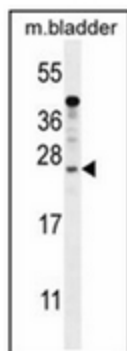
SHISAL1 (N-term) Rabbit Polyclonal Antibody

Product data:

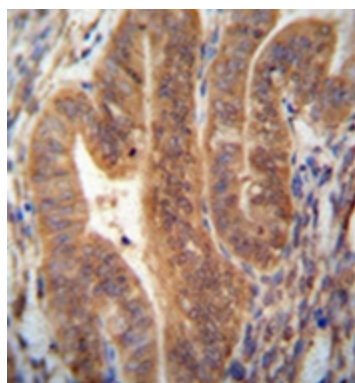
Product Type:	Primary Antibodies
Applications:	IHC, WB
Recommended Dilution:	ELISA: 1/1000. Western Blot: 1/100-1/500 Immunohistochemistry on Paraffin Sections: 1/50-1/100.
Reactivity:	Human, Mouse
Host:	Rabbit
Isotype:	Ig
Clonality:	Polyclonal
Immunogen:	KLH conjugated synthetic peptide between 25-55 amino acids from the N-terminal region of Human KIAA1644
Specificity:	This antibody recognizes Human and Mouse KIAA1644 (N-term).
Formulation:	PBS containing 0.09% (W/V) Sodium Azide as preservative State: Aff - Purified State: Liquid purified Ig fraction
Concentration:	lot specific
Purification:	Protein A column, followed by peptide affinity purification
Conjugation:	Unconjugated
Storage:	Store undiluted at 2-8°C for one month or (in aliquots) at -20°C for longer. Avoid repeated freezing and thawing.
Stability:	Shelf life: one year from despatch.
Gene Name:	KIAA1644
Database Link:	Entrez Gene 85352 Human Q3SXP7
Synonyms:	Uncharacterized protein
Note:	Molecular Weight: 22573 Da
Protein Families:	Transmembrane



[View online »](#)

Product images:

Western blot analysis of KIAA1644 antibody (N-term) in mouse bladder tissue lysates (35ug/lane). This demonstrates the KIAA1644 antibody detected the KIAA1644 protein (arrow).



Immunohistochemistry analysis in formalin fixed and paraffin embedded human uterus tissue reacted with KIAA1644 antibody (N-term), which was peroxidase conjugated to the secondary antibody and followed by DAB staining.