

## Product datasheet for **AP52349PU-N**

### **KIAA1324L (N-term) Rabbit Polyclonal Antibody**

#### **Product data:**

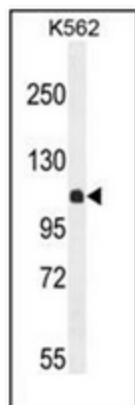
Product Type:	Primary Antibodies
Applications:	FC, IHC, WB
Recommended Dilution:	<b>ELISA:</b> 1/1000. <b>Western Blot:</b> 1/100-1/500. <b>Flow Cytometry:</b> 1/10-1/50. <b>Immunohistochemistry on Paraffin Sections:</b> 1/50-1/100.
Reactivity:	Human, Mouse
Host:	Rabbit
Isotype:	Ig
Clonality:	Polyclonal
Immunogen:	KLH conjugated synthetic peptide between 109-138 amino acids from the N-terminal region of human KIAA1324L
Specificity:	This antibody recognizes Human and Mouse KIAA1324L (N-term).
Formulation:	PBS containing 0.09% (W/V) Sodium Azide as preservative State: Aff - Purified State: Liquid purified Ig fraction
Concentration:	lot specific
Purification:	Protein A column, followed by peptide affinity purification
Conjugation:	Unconjugated
Storage:	Store undiluted at 2-8°C for one month or (in aliquots) at -20°C for longer. Avoid repeated freezing and thawing.
Stability:	Shelf life: one year from despatch.
Gene Name:	KIAA1324-like
Database Link:	<a href="#">Entrez Gene 222223 Human A8MWY0</a>
Synonyms:	Estrogen-induced gene 121-like protein, hEIG121L, UPF0577 protein KIAA1324-like
Note:	<b>Molecular Weight:</b> 113842 Da



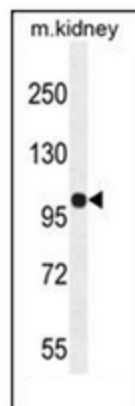
[View online »](#)

Protein Families: Transmembrane

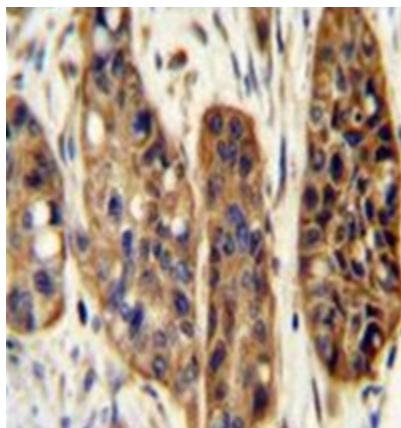
### Product images:



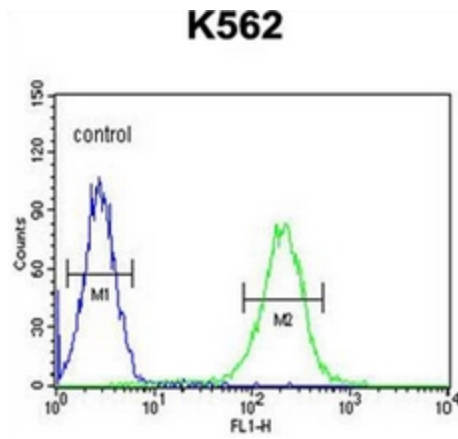
Western blot analysis of KIAA1324L Antibody (N-term) in K562 cell line lysates (35ug/lane). This demonstrates the KIAA1324L antibody detected the KIAA1324L protein (arrow)



Western blot analysis of KIAA1324L Antibody (N-term) in mouse kidney tissue lysates (35ug/lane). This demonstrates the KIAA1324L antibody detected the KIAA1324L protein (arrow).



Immunohistochemistry analysis in formalin fixed and paraffin embedded human esophagus carcinoma reacted with KIAA1324L Antibody (N-term), which was peroxidase conjugated to the secondary antibody and allowed by DAB staining.



Flow cytometric analysis of K562 cells using KIAA1324L Antibody (N-term) (right histogram) compared to a negative control cell (left histogram). FITC-conjugated goat-anti-rabbit secondary antibodies were used for the analysis.