

## Product datasheet for **AP52348PU-N**

### **KIAA1310 (KANSL3) (Center) Rabbit Polyclonal Antibody**

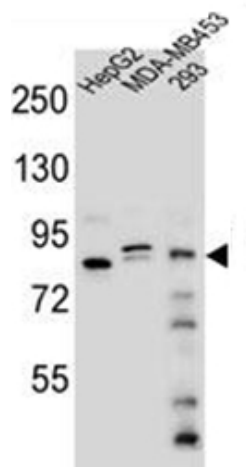
#### **Product data:**

Product Type:	Primary Antibodies
Applications:	IHC, WB
Recommended Dilution:	<b>ELISA:</b> 1/1000. <b>Western Blot:</b> 1/100-1/500. <b>Immunohistochemistry on Paraffin Sections:</b> 1/50-1/100.
Reactivity:	Human
Host:	Rabbit
Isotype:	Ig
Clonality:	Polyclonal
Immunogen:	KLH conjugated synthetic peptide between 401-431 amino acids from the Central region of human KIAA1310
Specificity:	This antibody recognizes Human KIAA1310 (Center).
Formulation:	PBS containing 0.09% (W/V) Sodium Azide as preservative State: Aff - Purified State: Liquid purified Ig fraction
Concentration:	lot specific
Purification:	Protein A column, followed by peptide affinity purification
Conjugation:	Unconjugated
Storage:	Store undiluted at 2-8°C for one month or (in aliquots) at -20°C for longer. Avoid repeated freezing and thawing.
Stability:	Shelf life: one year from despatch.
Gene Name:	KAT8 regulatory NSL complex subunit 3
Database Link:	<a href="#">Entrez Gene 55683 Human Q9P2N6</a>
Synonyms:	Uncharacterized protein ,PRTD, SI1
Note:	<b>Molecular Weight:</b> 95992 Da

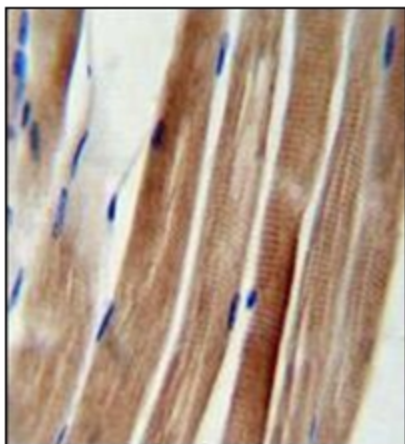


[View online »](#)

## Product images:



Western blot analysis of KIAA1310 Antibody (Center) in HepG2, MDA-MB453, 293 cell line lysates (35ug/lane). This demonstrates the KIAA1310 antibody detected the KIAA1310 protein (arrow).



Immunohistochemistry analysis in formalin fixed and paraffin embedded human skeletal muscle reacted with KIAA1310 Antibody (Center), which was peroxidase conjugated to the secondary antibody and followed by DAB staining.