

## Product datasheet for **AP52341PU-N**

### SIK3 (C-term) Rabbit Polyclonal Antibody

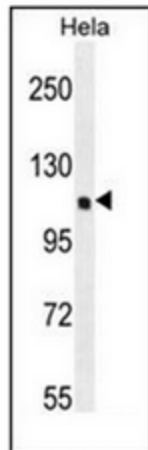
#### Product data:

Product Type:	Primary Antibodies
Applications:	FC, WB
Recommended Dilution:	<b>ELISA:</b> 1/1000. <b>Western Blot:</b> 1/100-1/500. <b>Flow Cytometry:</b> 1/10-1/50.
Reactivity:	Human
Host:	Rabbit
Isotype:	Ig
Clonality:	Polyclonal
Immunogen:	KLH conjugated synthetic peptide selected from the C-terminal region of Human QSK
Specificity:	This antibody recognizes Human QSK (C-term).
Formulation:	PBS containing 0.09% (W/V) Sodium Azide as preservative State: Aff - Purified State: Liquid purified Ig fraction
Concentration:	lot specific
Purification:	Protein A column, followed by peptide affinity purification
Conjugation:	Unconjugated
Storage:	Store undiluted at 2-8°C for one month or (in aliquots) at -20°C for longer. Avoid repeated freezing and thawing.
Stability:	Shelf life: one year from despatch.
Gene Name:	SIK family kinase 3
Database Link:	<a href="#">Entrez Gene 23387 Human Q9Y2K2</a>
Synonyms:	QSK, KIAA0999, SIK3, Serine/threonine-protein kinase QSK, EC=2.7.11.1, Salt-inducible kinase 3, SIK-3
Note:	<b>Molecular Weight:</b> 139980 Da
Protein Families:	Druggable Genome, Protein Kinase

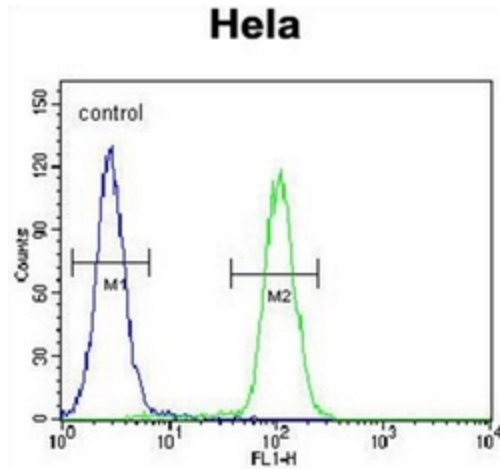


[View online »](#)

Product images:



Western blot analysis of QSK Antibody (C-term) in HeLa cell line lysates (35ug/lane).



Flow cytometric analysis of HeLa cells using QSK Antibody (C-term) (right histogram) compared to a negative control cell (left histogram). FITC-conjugated goat-anti-rabbit secondary antibodies were used for the analysis.