

## Product datasheet for **AP52338PU-N**

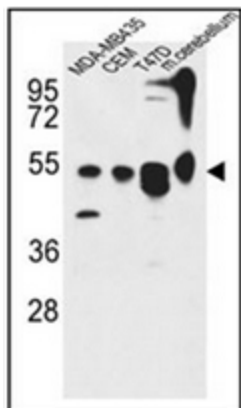
### **KIAA0652 (ATG13) (N-term) Rabbit Polyclonal Antibody**

#### **Product data:**

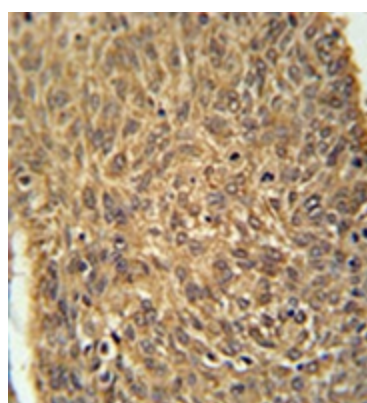
Product Type:	Primary Antibodies
Applications:	IHC, WB
Recommended Dilution:	<b>ELISA:</b> 1/1000. <b>Western Blot:</b> 1/100-1/500. <b>Immunohistochemistry on Paraffin Sections:</b> 1/50-1/100.
Reactivity:	Human
Host:	Rabbit
Isotype:	Ig
Clonality:	Polyclonal
Immunogen:	KLH conjugated synthetic peptide between 1~30 amino acids from the N-terminal region of human KIAA0652
Specificity:	This antibody recognizes Human KIAA0652 (N-term).
Formulation:	PBS containing 0.09% (W/V) Sodium Azide as preservative State: Aff - Purified State: Liquid purified Ig fraction
Concentration:	lot specific
Purification:	Protein A column, followed by peptide affinity purification
Conjugation:	Unconjugated
Storage:	Store undiluted at 2-8°C for one month or (in aliquots) at -20°C for longer. Avoid repeated freezing and thawing.
Stability:	Shelf life: one year from despatch.
Gene Name:	autophagy related 13
Database Link:	<a href="#">Entrez Gene 9776 Human O75143</a>
Synonyms:	KIAA0652, Autophagy-related protein 13
Note:	<b>Molecular Weight:</b> 56572 Da



[View online »](#)

**Product images:**

Western blot analysis of KIAA0652 Antibody (N-term) in MDA-MB435, CEM, 47D cell line and mouse cerebellum tissue lysates (35ug/lane).



Immunohistochemistry analysis in formalin fixed and paraffin embedded human lung carcinoma reacted with KIAA0652 Antibody (N-term), which was peroxidase conjugated to the secondary antibody and followed by DAB staining.