

Product datasheet for **AP52331PU-N**

Keratocan (KERA) (C-term) Rabbit Polyclonal Antibody

Product data:

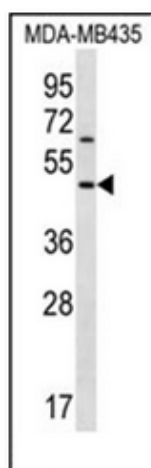
Product Type:	Primary Antibodies
Applications:	WB
Recommended Dilution:	ELISA: 1/1000. Western Blot: 1/1000.
Reactivity:	Human
Host:	Rabbit
Isotype:	Ig
Clonality:	Polyclonal
Immunogen:	KLH conjugated synthetic peptide between 228-257 amino acids from the C-terminal region of human Keratocan
Specificity:	This antibody recognizes Human Keratocan (C-term).
Formulation:	PBS containing 0.09% (W/V) Sodium Azide as preservative State: Aff - Purified State: Liquid purified Ig fraction
Concentration:	lot specific
Purification:	Protein A column, followed by peptide affinity purification
Conjugation:	Unconjugated
Storage:	Store undiluted at 2-8°C for one month or (in aliquots) at -20°C for longer. Avoid repeated freezing and thawing.
Stability:	Shelf life: one year from despatch.
Gene Name:	keratocan
Database Link:	Entrez Gene 11081 Human O60938
Background:	The protein encoded by this gene is a keratan sulfate proteoglycan that is involved in corneal transparency. Defects in this gene are a cause of autosomal recessive cornea plana 2 (CNA2).
Synonyms:	KERA, SLRR2B, Keratan sulfate proteoglycan keratocan, KTN, Keratocan
Note:	Molecular Weight: 40509 Da



[View online »](#)

Protein Families: Secreted Protein

Product images:



Western blot analysis of Keratocan Antibody (C-term) in MDA-MB435 cell line lysates (35ug/lane). This demonstrates the KERA antibody detected the KERA protein (arrow)