

Product datasheet for **AP52328PU-N**

KEAP1 (C-term) Rabbit Polyclonal Antibody

Product data:

Product Type:	Primary Antibodies
Applications:	IHC, WB
Recommended Dilution:	ELISA: 1/1000. Western Blot: 1/100-1/500. Immunohistochemistry on Paraffin Sections: 1/50-1/100.
Reactivity:	Human
Host:	Rabbit
Isotype:	Ig
Clonality:	Polyclonal
Immunogen:	KLH conjugated synthetic peptide between 429-457 amino acids from the C-terminal region of Human KEAP1
Specificity:	This antibody recognizes Human KEAP1 (C-term).
Formulation:	PBS containing 0.09% (W/V) Sodium Azide as preservative State: Aff - Purified State: Liquid purified Ig fraction
Concentration:	lot specific
Purification:	Protein A column, followed by peptide affinity purification
Conjugation:	Unconjugated
Storage:	Store undiluted at 2-8°C for one month or (in aliquots) at -20°C for longer. Avoid repeated freezing and thawing.
Stability:	Shelf life: one year from despatch.
Gene Name:	kelch like ECH associated protein 1
Database Link:	Entrez Gene 9817 Human Q14145
Synonyms:	KEAP1, INRF2, KIAA0132, KLHL19, Kelch-like ECH-associated protein 1, Cytosolic inhibitor of Nrf2, INrf2, Kelch-like protein 19
Note:	Molecular Weight: 69666 Da

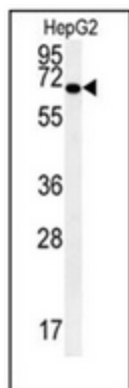


[View online »](#)

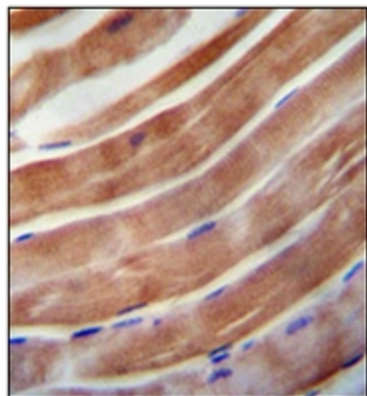
Protein Families: Transcription Factors

Protein Pathways: Ubiquitin mediated proteolysis

Product images:



Western blot analysis of KEAP1 Antibody (C-term) in HepG2 cell line lysates (35ug/lane). This demonstrates the KEAP1 antibody detected the KEAP1 protein (arrow).



Immunohistochemistry analysis in formalin fixed and paraffin embedded human skeletal muscle reacted with KEAP1 Antibody (C-term), which was peroxidase conjugated to the secondary antibody and followed by DAB staining.