

Product datasheet for **AP52325PU-N**

KCTD8 (C-term) Rabbit Polyclonal Antibody

Product data:

Product Type:	Primary Antibodies
Applications:	IHC, WB
Recommended Dilution:	ELISA: 1/1000. Western Blot: 1/100-1/500. Immunohistochemistry on Paraffin Sections: 1/50-1/100.
Reactivity:	Human, Mouse
Host:	Rabbit
Isotype:	Ig
Clonality:	Polyclonal
Immunogen:	KLH conjugated synthetic peptide between 441-470 amino acids from the C-terminal region of human KCTD8
Specificity:	This antibody recognizes Human KCTD8 (C-term).
Formulation:	PBS containing 0.09% (W/V) Sodium Azide as preservative State: Aff - Purified State: Liquid purified Ig fraction
Concentration:	lot specific
Purification:	Protein A column, followed by peptide affinity purification
Conjugation:	Unconjugated
Storage:	Store undiluted at 2-8°C for one month or (in aliquots) at -20°C for longer. Avoid repeated freezing and thawing.
Stability:	Shelf life: one year from despatch.
Gene Name:	potassium channel tetramerization domain containing 8
Database Link:	Entrez Gene 386617 Human Q6ZWB6

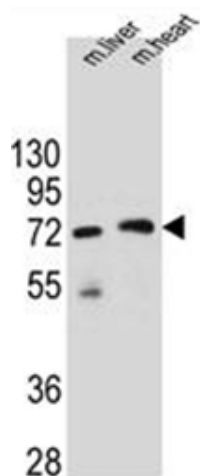


Background: Auxiliary subunit of GABA-B receptors that determine the pharmacology and kinetics of the receptor response. Increases agonist potency and markedly alter the G-protein signaling of the receptors by accelerating onset and promoting desensitization (By similarity).

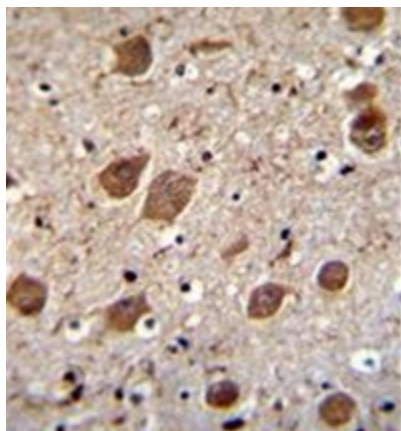
Synonyms: KCTD8

Note: **Molecular Weight:** 52440 Da

Product images:



Western blot analysis of KCTD8 Antibody (C-term) in mouse liver and heart tissue lysates (35ug/lane). This demonstrates the KCTD8 antibody detected the KCTD8 protein (arrow).



Immunohistochemistry analysis in formalin fixed and paraffin embedded human brain tissue reacted with KCTD8 Antibody (C-term), which was peroxidase conjugated to the secondary antibody and followed by DAB staining.