

## Product datasheet for **AP52324PU-N**

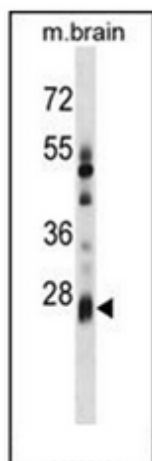
### KCTD6 (Center) Rabbit Polyclonal Antibody

#### Product data:

Product Type:	Primary Antibodies
Applications:	WB
Recommended Dilution:	<b>ELISA:</b> 1/1000. <b>Western Blot:</b> 1/100-1/500.
Reactivity:	Human, Mouse
Host:	Rabbit
Isotype:	Ig
Clonality:	Polyclonal
Immunogen:	KLH conjugated synthetic peptide between 74-103 amino acids from the Central region of human KCTD6
Specificity:	This antibody recognizes Human and Mouse KCTD6 (Center).
Formulation:	PBS containing 0.09% (W/V) Sodium Azide as preservative State: Aff - Purified State: Liquid purified Ig fraction
Concentration:	lot specific
Purification:	Protein A column, followed by peptide affinity purification
Conjugation:	Unconjugated
Storage:	Store undiluted at 2-8°C for one month or (in aliquots) at -20°C for longer. Avoid repeated freezing and thawing.
Stability:	Shelf life: one year from despatch.
Gene Name:	potassium channel tetramerization domain containing 6
Database Link:	<a href="#">Entrez Gene 71393 Mouse</a> <a href="#">Entrez Gene 200845 Human</a> <a href="#">Q8NC69</a>
Background:	KCTD6 is a domain of a potassium channel.
Synonyms:	MGC27385
Note:	<b>Molecular Weight:</b> 27610 Da
Protein Families:	Ion Channels: Other



[View online »](#)

**Product images:**

Western blot analysis of KCTD6 Antibody (Center) in mouse brain tissue lysates (35ug/lane). This demonstrates the KCTD6 antibody detected the KCTD6 protein (arrow).