

Product datasheet for **AP52323PU-N**

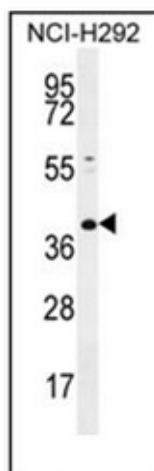
KCTD2 (C-term) Rabbit Polyclonal Antibody

Product data:

Product Type:	Primary Antibodies
Applications:	WB
Recommended Dilution:	ELISA: 1/1000. Western Blot: 1/100-1/500.
Reactivity:	Human
Host:	Rabbit
Isotype:	Ig
Clonality:	Polyclonal
Immunogen:	KLH conjugated synthetic peptide between 231-263 amino acids from the C-terminal region of human KCTD2
Specificity:	This antibody recognizes Human KCTD2 (C-term).
Formulation:	PBS containing 0.09% (W/V) Sodium Azide as preservative State: Aff - Purified State: Liquid purified Ig fraction
Concentration:	lot specific
Purification:	Protein A column, followed by peptide affinity purification
Conjugation:	Unconjugated
Storage:	Store undiluted at 2-8°C for one month or (in aliquots) at -20°C for longer. Avoid repeated freezing and thawing.
Stability:	Shelf life: one year from despatch.
Gene Name:	potassium channel tetramerization domain containing 2
Database Link:	Entrez Gene 23510 Human Q14681
Synonyms:	KCTD2, KIAA0176, BTB/POZ domain-containing protein KCTD2
Note:	Molecular Weight: 28527 Da



[View online »](#)

Product images:

Western blot analysis of KCTD2 Antibody (C-term) in NCI-H292 cell line lysates (35ug/lane). This demonstrates the KCTD2 antibody detected the KCTD2 protein (arrow).