

Product datasheet for **AP52320PU-N**

KCNT2 (C-term) Rabbit Polyclonal Antibody

Product data:

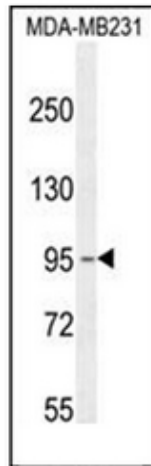
Product Type:	Primary Antibodies
Applications:	FC, IHC, WB
Recommended Dilution:	ELISA: 1/1000. Western Blot: 1/100-1/500. Flow Cytometry: 1/10-1/50. Immunohistochemistry on Paraffin Sections: 1/50-1/100.
Reactivity:	Human
Host:	Rabbit
Isotype:	Ig
Clonality:	Polyclonal
Immunogen:	KLH conjugated synthetic peptide between 1076-1105 amino acids from the C-terminal region of human KCNT2 / SLICK
Specificity:	This antibody recognizes Human KCNT2 / SLICK (C-term).
Formulation:	PBS containing 0.09% (W/V) Sodium Azide as preservative State: Aff - Purified State: Liquid purified Ig fraction
Concentration:	lot specific
Purification:	Protein A column, followed by peptide affinity purification
Conjugation:	Unconjugated
Storage:	Store undiluted at 2-8°C for one month or (in aliquots) at -20°C for longer. Avoid repeated freezing and thawing.
Stability:	Shelf life: one year from despatch.
Gene Name:	potassium sodium-activated channel subfamily T member 2
Database Link:	Entrez Gene 343450 Human Q6UVM3
Synonyms:	Slo2.1
Note:	Molecular Weight: 130501 Da



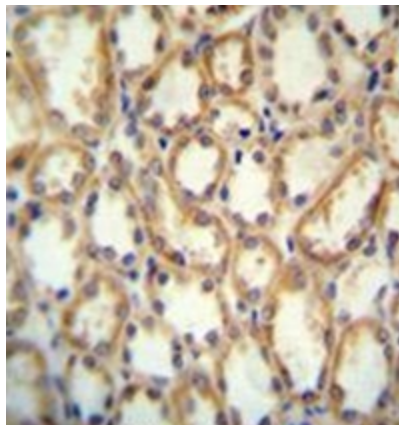
[View online »](#)

Protein Families: Druggable Genome, Ion Channels: Potassium, Transmembrane

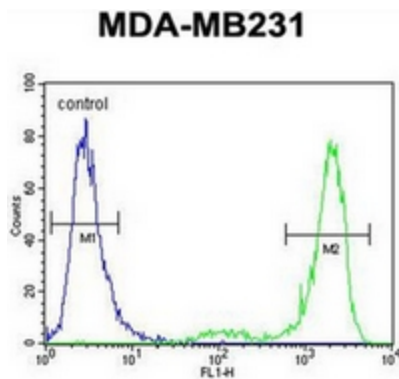
Product images:



Western blot analysis of KCNT2 / SLICK Antibody (C-term) in MDA-MB231 cell line lysates (35ug/lane). This demonstrates the KCNT2 antibody detected the KCNT2 protein (arrow).



immunohistochemistry analysis in formalin fixed and paraffin embedded human kidney tissue reacted with KCNT2 / SLICK Antibody (C-term) followed by peroxidase conjugation of the secondary antibody and DAB staining.



Flow cytometric analysis of MDA-MB231 cells using KCNT2 / SLICK Antibody (C-term) (right histogram) compared to a negative control cell (left histogram). FITC-conjugated goat-anti-rabbit secondary antibodies were used for the analysis.