

Product datasheet for **AP52315PU-N**

KCNMB1 (Center) Rabbit Polyclonal Antibody

Product data:

Product Type:	Primary Antibodies
Applications:	WB
Recommended Dilution:	ELISA: 1/1000. Western Blot: 1/100-1/500.
Reactivity:	Human
Host:	Rabbit
Isotype:	Ig
Clonality:	Polyclonal
Immunogen:	KLH conjugated synthetic peptide between 42-72 amino acids from the Central region of human KCNMB1
Specificity:	This antibody recognizes Human KCNMB1 (Center).
Formulation:	PBS containing 0.09% (W/V) Sodium Azide as preservative State: Aff - Purified State: Liquid purified Ig fraction
Concentration:	lot specific
Purification:	Protein A column, followed by peptide affinity purification
Conjugation:	Unconjugated
Storage:	Store undiluted at 2-8°C for one month or (in aliquots) at -20°C for longer. Avoid repeated freezing and thawing.
Stability:	Shelf life: one year from despatch.
Gene Name:	potassium calcium-activated channel subfamily M regulatory beta subunit 1
Database Link:	Entrez Gene 3779 Human Q16558
Background:	MaxiK channels are large conductance, voltage and calcium-sensitive potassium channels which are fundamental to the control of smooth muscle tone and neuronal excitability. MaxiK channels can be formed by 2 subunits: the pore-forming alpha subunit and the product of this gene, the modulatory beta subunit. Intracellular calcium regulates the physical association between the alpha and beta subunits.



[View online »](#)

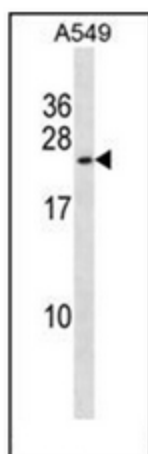
Synonyms: subfamily M beta-1, Maxi K channel beta-1, BK channel beta-1, K VCAbeta-1, Slo-beta-1, Charybdotoxin receptor subunit beta-1

Note: **Molecular Weight:** 21797 Da

Protein Families: Druggable Genome, Ion Channels: Other, Transmembrane

Protein Pathways: Vascular smooth muscle contraction

Product images:



Western blot analysis of KCNMB1 Antibody (Center) in A549 cell line lysates (35ug/lane). This demonstrates the KCNMB1 antibody detected the KCNMB1 protein (arrow).