

Product datasheet for **AP52314PU-N**

KCNK1 (C-term) Rabbit Polyclonal Antibody

Product data:

Product Type:	Primary Antibodies
Applications:	WB
Recommended Dilution:	ELISA: 1/1000. Western Blot: 1/100-1/500.
Reactivity:	Human
Host:	Rabbit
Isotype:	Ig
Clonality:	Polyclonal
Immunogen:	KLH conjugated synthetic peptide between 270-300 amino acids from the C-terminal region of human KCNK1
Specificity:	This antibody recognizes Human KCNK1 (C-term).
Formulation:	PBS containing 0.09% (W/V) Sodium Azide as preservative State: Aff - Purified State: Liquid purified Ig fraction
Concentration:	lot specific
Purification:	Protein A column, followed by peptide affinity purification
Conjugation:	Unconjugated
Storage:	Store undiluted at 2-8°C for one month or (in aliquots) at -20°C for longer. Avoid repeated freezing and thawing.
Stability:	Shelf life: one year from despatch.
Gene Name:	potassium two pore domain channel subfamily K member 1
Database Link:	Entrez Gene 3775 Human O00180
Background:	This gene encodes one of the members of the superfamily of potassium channel proteins containing two pore-forming P domains. The product of this gene has not been shown to be a functional channel, however, it may require other non-pore-forming proteins for activity.
Synonyms:	KCNK1, HOHO1, KCNO1, TWIK1, Potassium channel subfamily K member 1, Potassium channel KCNO1

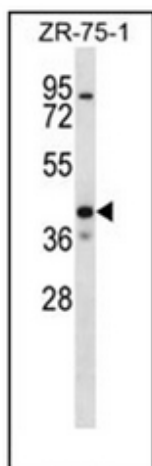


[View online »](#)

Note: **Molecular Weight:** 38143 Da

Protein Families: Druggable Genome, Ion Channels: Potassium, Transmembrane

Product images:



Western blot analysis of KCNK1 Antibody (C-term) in ZR-75-1 cell line lysates (35ug/lane). This demonstrates the KCNK1 antibody detected the KCNK1 protein (arrow).