

## Product datasheet for **AP52304PU-N**

### **KCNH4 (N-term) Rabbit Polyclonal Antibody**

#### **Product data:**

Product Type:	Primary Antibodies
Applications:	FC, WB
Recommended Dilution:	<b>ELISA:</b> 1/1000. <b>Western Blot:</b> 1/100-1/500. <b>Flow Cytometry:</b> 1/10-1/50.
Reactivity:	Human
Host:	Rabbit
Isotype:	Ig
Clonality:	Polyclonal
Immunogen:	KLH conjugated synthetic peptide between 70-100 amino acids from the N-terminal region of human KCNH4
Specificity:	This antibody recognizes Human KCNH4 (N-term).
Formulation:	PBS containing 0.09% (W/V) Sodium Azide as preservative State: Aff - Purified State: Liquid purified Ig fraction
Concentration:	lot specific
Purification:	Protein A column, followed by peptide affinity purification
Conjugation:	Unconjugated
Storage:	Store undiluted at 2-8°C for one month or (in aliquots) at -20°C for longer. Avoid repeated freezing and thawing.
Stability:	Shelf life: one year from despatch.
Gene Name:	potassium voltage-gated channel subfamily H member 4
Database Link:	<a href="#">Entrez Gene 23415 Human</a> <a href="#">Q9UQ05</a>



[View online »](#)

**Background:**

Voltage-gated potassium (Kv) channels represent the most complex class of voltage-gated ion channels from both functional and structural standpoints. Their diverse functions include regulating neurotransmitter release, heart rate, insulin secretion, neuronal excitability, epithelial electrolyte transport, smooth muscle contraction, and cell volume. This gene encodes a member of the potassium channel, voltage-gated, subfamily H. This member is a pore-forming (alpha) subunit. The gene is brain-specific, and located in the neocortex and the striatum. It may be involved in cellular excitability of restricted neurons in the central nervous system.

**Synonyms:**

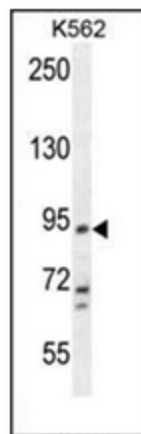
KCNH4, ELK channel 1, ELK1, Brain-specific eag-like channel 2, BEC2

**Note:**

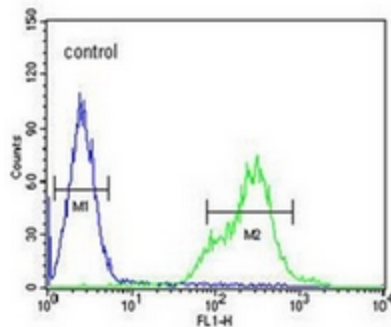
**Molecular Weight:** 111693 Da

**Protein Families:**

Druggable Genome, Ion Channels: Potassium, Transmembrane

**Product images:**

Western blot analysis of KCN4 Antibody (N-term) in K562 cell line lysates (35ug/lane). This demonstrates the KCN4 antibody detected the KCN4 protein (arrow).

**K562**

Flow cytometric analysis of K562 cells using KCN4 Antibody (N-term) (right histogram) compared to a negative control cell (left histogram). FITC-conjugated goat-anti-rabbit secondary antibodies were used for the analysis.