

Product datasheet for **AP52302PU-N**

KCND1 (N-term) Rabbit Polyclonal Antibody

Product data:

Product Type:	Primary Antibodies
Applications:	WB
Recommended Dilution:	ELISA: 1/1000. Western Blot: 1/100-1/500.
Reactivity:	Human
Host:	Rabbit
Isotype:	Ig
Clonality:	Polyclonal
Immunogen:	KLH conjugated synthetic peptide between 117-147 amino acids from the N-terminal region of human KCND1
Specificity:	This antibody recognizes Human KCND1 (N-term).
Formulation:	PBS containing 0.09% (W/V) Sodium Azide as preservative State: Aff - Purified State: Liquid purified Ig fraction
Concentration:	lot specific
Purification:	Protein A column, followed by peptide affinity purification
Conjugation:	Unconjugated
Storage:	Store undiluted at 2-8°C for one month or (in aliquots) at -20°C for longer. Avoid repeated freezing and thawing.
Stability:	Shelf life: one year from despatch.
Gene Name:	potassium voltage-gated channel subfamily D member 1
Database Link:	Entrez Gene 3750 Human Q9NSA2



[View online »](#)

Background:

Voltage-gated potassium (Kv) channels represent the most complex class of voltage-gated ion channels from both functional and structural standpoints. Their diverse functions include regulating neurotransmitter release, heart rate, insulin secretion, neuronal excitability, epithelial electrolyte transport, smooth muscle contraction, and cell volume. Four sequence-related potassium channel genes - shaker, shaw, shab, and shal - have been identified in *Drosophila*, and each has been shown to have human homolog(s). This gene encodes a member of the potassium channel, voltage-gated, shal-related subfamily, members of which form voltage-activated A-type potassium ion channels and are prominent in the repolarization phase of the action potential. This gene is expressed at moderate levels in all tissues analyzed, with lower levels in skeletal muscle.

Synonyms:

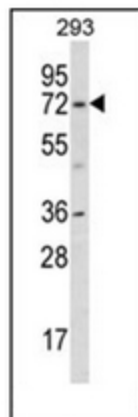
Voltage-gated potassium channel subunit Kv4.1

Note:

Molecular Weight: 71330 Da

Protein Families:

Druggable Genome, Ion Channels: Potassium, Transmembrane

Product images:

Western blot analysis of KCND1 Antibody (N-term) in 293 cell line lysates (35ug/lane). This demonstrates the KCND1 antibody detected the KCND1 protein (arrow).