

Product datasheet for **AP52301PU-N**

KCNC4 (C-term) Rabbit Polyclonal Antibody

Product data:

Product Type:	Primary Antibodies
Applications:	WB
Recommended Dilution:	ELISA: 1/1000. Western Blot: 1/100-1/500.
Reactivity:	Human
Host:	Rabbit
Isotype:	Ig
Clonality:	Polyclonal
Immunogen:	KLH conjugated synthetic peptide between 517-546 amino acids from the C-terminal region of human KCNC4
Specificity:	This antibody recognizes Human KCNC4 (C-term).
Formulation:	PBS containing 0.09% (W/V) Sodium Azide as preservative State: Aff - Purified State: Liquid purified Ig fraction
Concentration:	lot specific
Purification:	Protein A column, followed by peptide affinity purification
Conjugation:	Unconjugated
Storage:	Store undiluted at 2-8°C for one month or (in aliquots) at -20°C for longer. Avoid repeated freezing and thawing.
Stability:	Shelf life: one year from despatch.
Gene Name:	potassium voltage-gated channel subfamily C member 4
Database Link:	Entrez Gene 3749 Human Q03721



[View online »](#)

Background:

The Shaker gene family of *Drosophila* encodes components of voltage-gated potassium channels and is comprised of four subfamilies. Based on sequence similarity, this gene is similar to the Shaw subfamily. The protein encoded by this gene belongs to the delayed rectifier class of channel proteins and is an integral membrane protein that mediates the voltage-dependent potassium ion permeability of excitable membranes. It generates atypical voltage-dependent transient current that may be important for neuronal excitability. Multiple transcript variants have been found for this gene.

Synonyms:

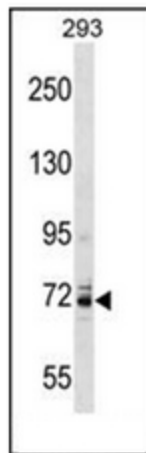
Potassium voltage-gated channel subfamily C member 4, Voltage-gated potassium channel subunit Kv3.4, KSHIIC

Note:

Molecular Weight: 69767 Da

Protein Families:

Druggable Genome, Ion Channels: Potassium, Transmembrane

Product images:

Western blot analysis of KCNC4 Antibody (C-term) in 293 cell line lysates (35ug/lane). This demonstrates the KCNC4 antibody detected the KCNC4 protein (arrow).