

Product datasheet for **AP52300PU-N**

KCNA3 (Center) Rabbit Polyclonal Antibody

Product data:

| | |
|-----------------------|--|
| Product Type: | Primary Antibodies |
| Applications: | WB |
| Recommended Dilution: | ELISA: 1/1000. Western Blot: 1/100-1/500. |
| Reactivity: | Human |
| Host: | Rabbit |
| Isotype: | Ig |
| Clonality: | Polyclonal |
| Immunogen: | KLH conjugated synthetic peptide between 238-268 amino acids from the Central region of human KCNA3 |
| Specificity: | This antibody recognizes Human KCNA3 (Center). |
| Formulation: | PBS containing 0.09% (W/V) Sodium Azide as preservative State: Aff - Purified State: Liquid purified Ig fraction |
| Concentration: | lot specific |
| Purification: | Protein A column, followed by peptide affinity purification |
| Conjugation: | Unconjugated |
| Storage: | Store undiluted at 2-8°C for one month or (in aliquots) at -20°C for longer. Avoid repeated freezing and thawing. |
| Stability: | Shelf life: one year from despatch. |
| Gene Name: | potassium voltage-gated channel subfamily A member 3 |
| Database Link: | Entrez Gene 3738 Human P22001 |



[View online »](#)

Background:

Potassium channels represent the most complex class of voltage-gated ion channels from both functional and structural standpoints. Their diverse functions include regulating neurotransmitter release, heart rate, insulin secretion, neuronal excitability, epithelial electrolyte transport, smooth muscle contraction, and cell volume. Four sequence-related potassium channel genes - shaker, shaw, shab, and shal - have been identified in *Drosophila*, and each has been shown to have human homolog(s). This gene encodes a member of the potassium channel, voltage-gated, shaker-related subfamily. This member contains six membrane-spanning domains with a shaker-type repeat in the fourth segment. It belongs to the delayed rectifier class, members of which allow nerve cells to efficiently repolarize following an action potential. It plays an essential role in T-cell proliferation and activation. This gene appears to be intronless and it is clustered together with KCNA2 and KCNA10 genes on chromosome 1.

Synonyms:

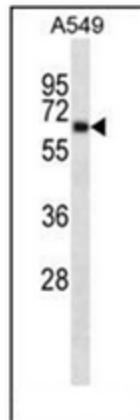
Potassium voltage-gated channel subfamily A member 3, Voltage-gated potassium channel subunit Kv1.3, HPCN3, HGK5, HuKIII, HLK3

Note:

Molecular Weight: 63842 Da

Protein Families:

Druggable Genome, Ion Channels: Potassium, Transmembrane

Product images:

Western blot analysis of KCNA3 Antibody (Center) in A549 cell line lysates (35ug/lane). This demonstrates the KCNA3 antibody detected the KCNA3 protein (arrow).