

Product datasheet for **AP52299PU-N**

Kv1.2 (KCNA2) (C-term) Rabbit Polyclonal Antibody

Product data:

Product Type:	Primary Antibodies
Applications:	IHC, WB
Recommended Dilution:	ELISA: 1/1000. Western Blot: 1/100-1/500. Immunohistochemistry on Paraffin Sections: 1/10-1/50.
Reactivity:	Human
Host:	Rabbit
Isotype:	Ig
Clonality:	Polyclonal
Immunogen:	KLH conjugated synthetic peptide between 450-479 amino acids from the C-terminal region of human KCNA2
Specificity:	This antibody recognizes Human KCNA2 (C-term).
Formulation:	PBS containing 0.09% (W/V) Sodium Azide as preservative State: Aff - Purified State: Liquid purified Ig fraction
Concentration:	lot specific
Purification:	Protein A column, followed by peptide affinity purification
Conjugation:	Unconjugated
Storage:	Store undiluted at 2-8°C for one month or (in aliquots) at -20°C for longer. Avoid repeated freezing and thawing.
Stability:	Shelf life: one year from despatch.
Gene Name:	potassium voltage-gated channel subfamily A member 2
Database Link:	Entrez Gene 3737 Human P16389



[View online »](#)

Background:

Potassium channels represent the most complex class of voltage-gated ion channels from both functional and structural standpoints. Their diverse functions include regulating neurotransmitter release, heart rate, insulin secretion, neuronal excitability, epithelial electrolyte transport, smooth muscle contraction, and cell volume. Four sequence-related potassium channel genes - shaker, shaw, shab, and shal - have been identified in *Drosophila*, and each has been shown to have human homolog(s). This gene encodes a member of the potassium channel, voltage-gated, shaker-related subfamily. This member contains six membrane-spanning domains with a shaker-type repeat in the fourth segment. It belongs to the delayed rectifier class, members of which allow nerve cells to efficiently repolarize following an action potential. The coding region of this gene is intronless, and the gene is clustered with genes KCNA3 and KCNA10 on chromosome 1.

Synonyms:

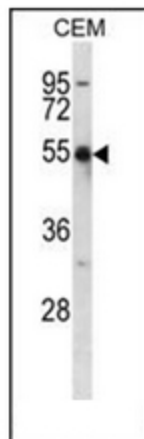
Potassium voltage-gated channel subfamily A member 2, Voltage-gated potassium channel subunit Kv1.2, HBK5, NGK1, HUKIV, KCNA2

Note:

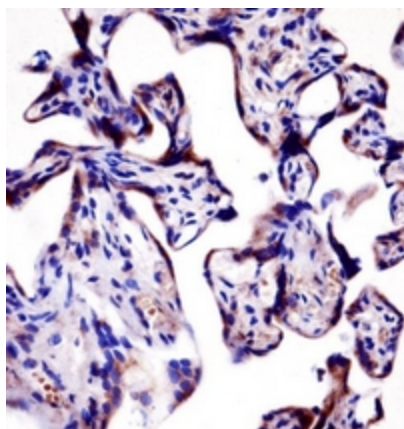
Molecular Weight: 56717 Da

Protein Families:

Druggable Genome, Ion Channels: Potassium, Transmembrane

Product images:

Western blot analysis of KCNA2 Antibody (C-term) in CEM cell line lysates (35ug/lane). This demonstrates the KCNA2 antibody detected the KCNA2 protein (arrow).



Immunohistochemistry analysis in formalin fixed and paraffin embedded human placenta tissue reacted with, which was peroxidase conjugated to the secondary antibody and followed by DAB staining.