

Product datasheet for **AP52298PU-N**

KCNA1 (Center) Rabbit Polyclonal Antibody

Product data:

Product Type:	Primary Antibodies
Applications:	IHC, WB
Recommended Dilution:	ELISA: 1/1000. Western Blot: 1/100-1/500. Immunohistochemistry on Paraffin Sections: 1/10-1/50.
Reactivity:	Human
Host:	Rabbit
Isotype:	Ig
Clonality:	Polyclonal
Immunogen:	KLH conjugated synthetic peptide between 171-201 amino acids from the Central region of human KCNA1
Specificity:	This antibody recognizes Human KCNA1 (Center).
Formulation:	PBS containing 0.09% (W/V) Sodium Azide as preservative State: Aff - Purified State: Liquid purified Ig fraction
Concentration:	lot specific
Purification:	Protein A column, followed by peptide affinity purification
Conjugation:	Unconjugated
Storage:	Store undiluted at 2-8°C for one month or (in aliquots) at -20°C for longer. Avoid repeated freezing and thawing.
Stability:	Shelf life: one year from despatch.
Gene Name:	potassium voltage-gated channel subfamily A member 1
Database Link:	Entrez Gene 3736 Human Q09470



[View online »](#)

Background:

This gene encodes a voltage-gated delayed potassium channel that is phylogenetically related to the Drosophila Shaker channel. The encoded protein has six putative transmembrane segments (S1-S6), and the loop between S5 and S6 forms the pore and contains the conserved selectivity filter motif (GYGD). The functional channel is a homotetramer. The N-terminus of the channel is associated with beta subunits that can modify the inactivation properties of the channel as well as affect expression levels. The C-terminus of the channel is complexed to a PDZ domain protein that is responsible for channel targeting. Mutations in this gene have been associated with myokymia with periodic ataxia (AEMK).

Synonyms:

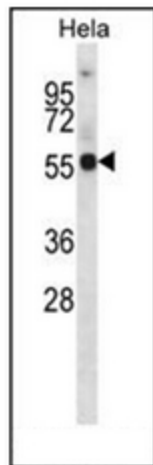
HUKI, HBK1

Note:

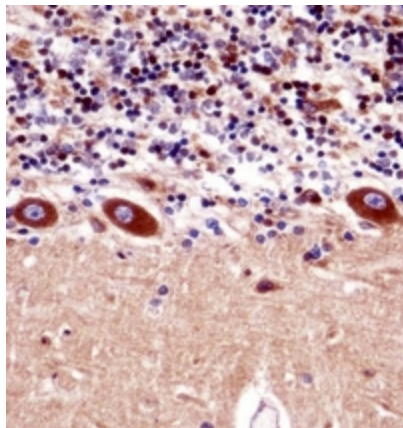
Molecular Weight: 56466 Da

Protein Families:

Druggable Genome, Ion Channels: Potassium, Transmembrane

Product images:

Western blot analysis of KCNA1 Antibody (Center) in HeLa cell line lysates (35ug/lane). This demonstrates the KCNA1 antibody detected the KCNA1 protein (arrow).



Immunohistochemistry analysis in formalin fixed and paraffin embedded human cerebellum tissue reacted with KCNA1 Antibody (Center), which was peroxidase conjugated to the secondary antibody and followed by DAB staining.