

Product datasheet for **AP52297PU-N**

PCMF (KCMF1) (C-term) Rabbit Polyclonal Antibody

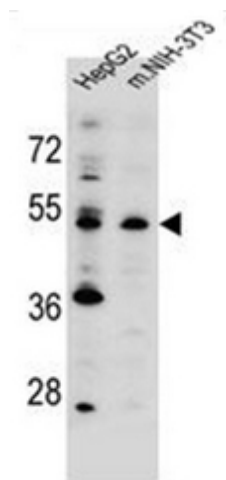
Product data:

Product Type:	Primary Antibodies
Applications:	WB
Recommended Dilution:	ELISA: 1/1000. Western Blot: 1/100-1/500.
Reactivity:	Human, Mouse
Host:	Rabbit
Isotype:	Ig
Clonality:	Polyclonal
Immunogen:	KLH conjugated synthetic peptide between 287-316 amino acids from the C-terminal region of human KCMF1.
Specificity:	This antibody recognizes Human and Mouse KCMF1 (C-term).
Formulation:	PBS containing 0.09% (W/V) Sodium Azide as preservative State: Aff - Purified State: Liquid purified Ig fraction
Concentration:	lot specific
Purification:	Protein A column, followed by peptide affinity purification
Conjugation:	Unconjugated
Storage:	Store undiluted at 2-8°C for one month or (in aliquots) at -20°C for longer. Avoid repeated freezing and thawing.
Stability:	Shelf life: one year from despatch.
Gene Name:	potassium channel modulatory factor 1
Database Link:	Entrez Gene 74287 Mouse Entrez Gene 56888 Human Q9P0J7
Background:	Has intrinsic E3 ubiquitin ligase activity and promotes ubiquitination.
Synonyms:	KCMF1, FIGC, ZZZ1, E3 ubiquitin-protein ligase KCMF1, Potassium channel modulatory factor, PCMF, FGF-induced in gastric cancer, ZZ-type zinc finger-containing protein 1
Note:	Molecular Weight: 41945 Da



[View online »](#)

Product images:



Western blot analysis of KCMF1 antibody (C-term) in HepG2, Mouse NIH-3T3 cell line lysates (35ug/lane). This demonstrates the KCMF1 antibody detected the KCMF1 protein (arrow).