

Product datasheet for **AP52296PU-N**

KCNE1L (KCNE5) (Center) Rabbit Polyclonal Antibody

Product data:

Product Type:	Primary Antibodies
Applications:	WB
Recommended Dilution:	ELISA: 1/1000. Western Blot: 1/1000.
Reactivity:	Human
Host:	Rabbit
Isotype:	Ig
Clonality:	Polyclonal
Immunogen:	KLH conjugated synthetic peptide between 67~96 amino acids from the Central region of Human KCE1L
Specificity:	This antibody recognizes Human KCE1L (Center).
Formulation:	PBS containing 0.09% (W/V) Sodium Azide as preservative State: Aff - Purified State: Liquid purified Ig fraction
Concentration:	lot specific
Purification:	Protein A column, followed by peptide affinity purification
Conjugation:	Unconjugated
Storage:	Store undiluted at 2-8°C for one month or (in aliquots) at -20°C for longer. Avoid repeated freezing and thawing.
Stability:	Shelf life: one year from despatch.
Gene Name:	potassium voltage-gated channel subfamily E regulatory subunit 5
Database Link:	Entrez Gene 23630 Human Q9UJ90



[View online »](#)

Background:

Voltage-gated potassium (Kv) channels represent the most complex class of voltage-gated ion channels from both functional and structural standpoints. Their diverse functions include regulating neurotransmitter release, heart rate, insulin secretion, neuronal excitability, epithelial electrolyte transport, smooth muscle contraction, and cell volume. This gene encodes a membrane protein which has sequence similarity to the KCNE1 gene product, a member of the potassium channel, voltage-gated, isk-related subfamily. This intronless gene is deleted in AMME contiguous gene syndrome and may be involved in the cardiac and neurologic abnormalities found in the AMME contiguous gene syndrome.

Synonyms:

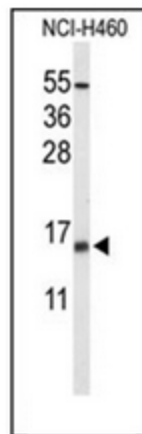
AMMECR2 protein

Note:

Molecular Weight: 14993 Da

Protein Families:

Druggable Genome, Ion Channels: Other, Transmembrane

Product images:

Western blot analysis of KCE1L Antibody (Center) in NCI-H460 cell line lysates (35ug/lane). KCE1L (arrow) was detected using the purified Pab.