

Product datasheet for **AP52294PU-N**

KBTBD10 (KLHL41) (C-term) Rabbit Polyclonal Antibody

Product data:

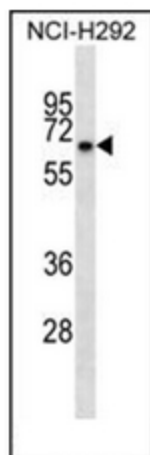
Product Type:	Primary Antibodies
Applications:	WB
Recommended Dilution:	ELISA: 1/1000. Western Blot: 1/100-1/500.
Reactivity:	Human
Host:	Rabbit
Isotype:	Ig
Clonality:	Polyclonal
Immunogen:	KLH conjugated synthetic peptide between 546-575 amino acids from the C-terminal region of human KBTBD10
Specificity:	This antibody recognizes Human KBTBD10 (C-term).
Formulation:	PBS containing 0.09% (W/V) Sodium Azide as preservative State: Aff - Purified State: Liquid purified Ig fraction
Concentration:	lot specific
Purification:	Protein A column, followed by peptide affinity purification
Conjugation:	Unconjugated
Storage:	Store undiluted at 2-8°C for one month or (in aliquots) at -20°C for longer. Avoid repeated freezing and thawing.
Stability:	Shelf life: one year from despatch.
Gene Name:	kelch like family member 41
Database Link:	Entrez Gene 10324 Human O60662
Background:	KBTBD10 is required for pseudopod elongation in transformed cells. Substrate-specific adapter of an E3 ubiquitin-protein ligase complex which mediates the ubiquitination and subsequent proteasomal degradation of target proteins.
Synonyms:	KBTBD10, KRP1, Kelch-related protein 1, Kel-like protein 23, Sarcosin



[View online »](#)

Note: **Molecular Weight:** 68037 Da

Product images:



Western blot analysis of KBTBD10 Antibody (C-term) in NCI-H292 cell line lysates (35ug/lane). This demonstrates the KBTBD10 antibody detected the KBTBD10 protein (arrow).