

Product datasheet for **AP52293PU-N**

katanin p80 (KATNBI) (Center) Rabbit Polyclonal Antibody

Product data:

Product Type:	Primary Antibodies
Applications:	WB
Recommended Dilution:	ELISA: 1/1000. Western Blot: 1/100-1/500.
Reactivity:	Human
Host:	Rabbit
Isotype:	Ig
Clonality:	Polyclonal
Immunogen:	KLH conjugated synthetic peptide between 330-359 amino acids from the Central region of human KATNBI
Specificity:	This antibody recognizes Human KATNBI (Center).
Formulation:	PBS containing 0.09% (W/V) Sodium Azide as preservative State: Aff - Purified State: Liquid purified Ig fraction
Concentration:	lot specific
Purification:	Protein A column, followed by peptide affinity purification
Conjugation:	Unconjugated
Storage:	Store undiluted at 2-8°C for one month or (in aliquots) at -20°C for longer. Avoid repeated freezing and thawing.
Stability:	Shelf life: one year from despatch.
Gene Name:	katanin regulatory subunit B1
Database Link:	Entrez Gene 10300 Human Q9BVA0

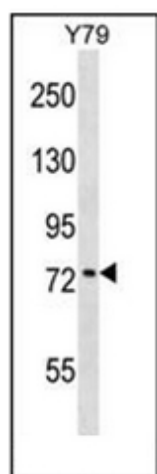


Background: Microtubules, polymers of alpha and beta tubulin subunits, form the mitotic spindle of a dividing cell and help to organize membranous organelles during interphase. Katanin is a heterodimer that consists of a 60 kDa ATPase (p60 subunit A 1) and an 80 kDa accessory protein (p80 subunit B 1). The p60 subunit acts to sever and disassemble microtubules, while the p80 subunit targets the enzyme to the centrosome. Katanin is a member of the AAA family of ATPases.

Synonyms: Katanin p80 subunit B1, p80 katanin

Note: **Molecular Weight:** 72334 Da

Product images:



Western blot analysis of KATNB1 Antibody (Center) in Y79 cell line lysates (35ug/lane). This demonstrates the KATNB1 antibody detected the KATNB1 protein (arrow).