

Product datasheet for **AP52292PU-N**

KATNAL1 (N-term) Rabbit Polyclonal Antibody

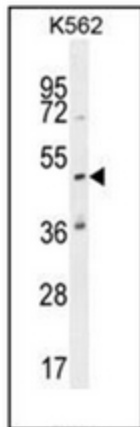
Product data:

| | |
|-----------------------|--|
| Product Type: | Primary Antibodies |
| Applications: | FC, IHC, WB |
| Recommended Dilution: | ELISA: 1/1000. Western Blot: 1/100-1/500. Flow Cytometry: 1/10-1/50. Immunohistochemistry on Paraffin Sections: 1/50-1/100. |
| Reactivity: | Human |
| Host: | Rabbit |
| Isotype: | Ig |
| Clonality: | Polyclonal |
| Immunogen: | KLH conjugated synthetic peptide between 144-174 amino acids from the N-terminal region of human KATNAL1 |
| Specificity: | This antibody recognizes Human KATNAL1 (N-term). |
| Formulation: | PBS containing 0.09% (W/V) Sodium Azide as preservative State: Aff - Purified State: Liquid purified Ig fraction |
| Concentration: | lot specific |
| Purification: | Protein A column, followed by peptide affinity purification |
| Conjugation: | Unconjugated |
| Storage: | Store undiluted at 2-8°C for one month or (in aliquots) at -20°C for longer. Avoid repeated freezing and thawing. |
| Stability: | Shelf life: one year from despatch. |
| Gene Name: | katanin catalytic subunit A1 like 1 |
| Database Link: | Entrez Gene 84056 Human Q9BW62 |
| Synonyms: | p60 katanin-like 1 |
| Note: | Molecular Weight: 55392 Da |

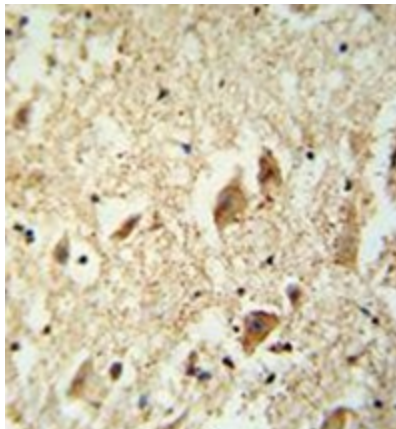


[View online »](#)

Product images:

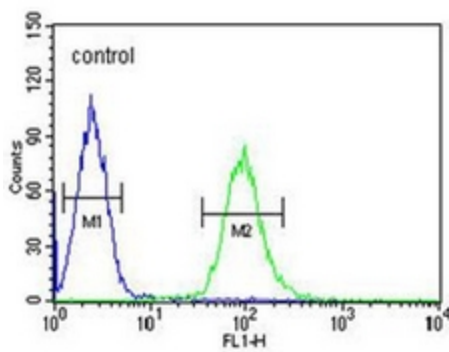


Western blot analysis of KATNAL1 Antibody (N-term) in K562 cell line lysates (35ug/lane). This demonstrates the KATL1 antibody detected the KATL1 protein (arrow).



Immunohistochemistry analysis in formalin fixed and paraffin embedded human brain tissue reacted with KATNAL1 Antibody (N-term), which was peroxidase conjugated to the secondary antibody and followed by DAB staining.

K562



Flow cytometric analysis of K562 cells using KATNAL1 Antibody (N-term) (right histogram) compared to a negative control cell (left histogram). FITC-conjugated goat-anti-rabbit secondary antibodies were used for the analysis.