

## Product datasheet for **AP52290PU-N**

### Lysyl tRNA synthetase (KARS) (N-term) Rabbit Polyclonal Antibody

#### Product data:

Product Type:	Primary Antibodies
Applications:	FC, WB
Recommended Dilution:	<b>ELISA:</b> 1/1000. <b>Western Blot:</b> 1/100-1/500. <b>Flow Cytometry:</b> 1/10-1/50.
Reactivity:	Human
Host:	Rabbit
Isotype:	Ig
Clonality:	Polyclonal
Immunogen:	KLH conjugated synthetic peptide between 77-105 amino acids from the N-terminal region of human KARS
Specificity:	This antibody recognizes Human KARS (N-term).
Formulation:	PBS containing 0.09% (W/V) Sodium Azide as preservative State: Purified State: Liquid purified Ig fraction
Concentration:	lot specific
Purification:	Saturated Ammonium Sulfate (SAS) precipitation followed by dialysis against PBS
Conjugation:	Unconjugated
Storage:	Store undiluted at 2-8°C for one month or (in aliquots) at -20°C for longer. Avoid repeated freezing and thawing.
Stability:	Shelf life: one year from despatch.
Gene Name:	lysyl-tRNA synthetase
Database Link:	<a href="#">Entrez Gene 3735 Human Q15046</a>



[View online »](#)

**Background:**

Aminoacyl-tRNA synthetases are a class of enzymes that charge tRNAs with their cognate amino acids. Lysyl-tRNA synthetase is a homodimer localized to the cytoplasm which belongs to the class II family of tRNA synthetases. It has been shown to be a target of autoantibodies in the human autoimmune diseases, polymyositis or dermatomyositis. Alternatively spliced transcript variants encoding different isoforms have been found for this gene.

**Synonyms:**

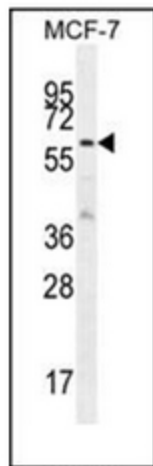
Lysyl-tRNA synthetase, KIAA0070, LysRS, Lysine-tRNA ligase

**Note:**

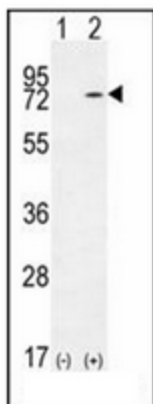
**Molecular Weight:** 68048 Da

**Protein Pathways:**

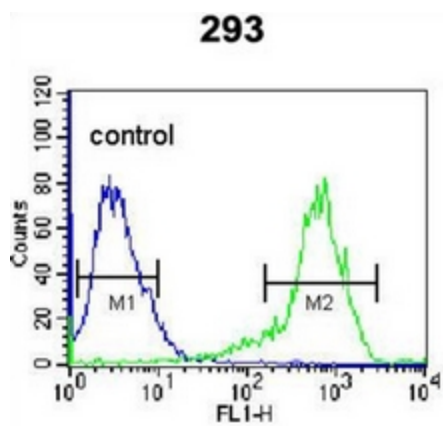
Aminoacyl-tRNA biosynthesis

**Product images:**


Western blot analysis of KARS Antibody (N-term) in MCF-7 cell line lysates (35ug/lane). This demonstrates the KARS antibody detected the KARS protein (arrow).



Western blot analysis of KARS (arrow) using KARS Antibody (N-term). 293 cell lysates (2 ug/lane) either nontransfected (Lane 1) or transiently transfected (Lane 2) with the KARS gene.



Flow cytometric analysis of 293 cells using KARS Antibody (N-term) (right histogram) compared to a negative control cell (left histogram). FITC-conjugated goat-anti-rabbit secondary antibodies were used for the analysis.