

## Product datasheet for **AP52288PU-N**

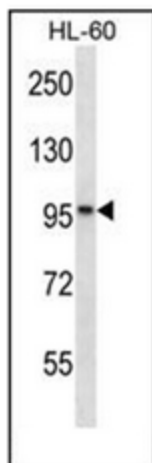
### **ANKRD25 (KANK2) (Center) Rabbit Polyclonal Antibody**

#### **Product data:**

Product Type:	Primary Antibodies
Applications:	WB
Recommended Dilution:	<b>ELISA:</b> 1/1000. <b>Western Blot:</b> 1/100-1/500.
Reactivity:	Human
Host:	Rabbit
Isotype:	Ig
Clonality:	Polyclonal
Immunogen:	KLH conjugated synthetic peptide between 464-493 amino acids from the Central region of human KANK2 / SIP
Specificity:	This antibody recognizes Human KANK2 / SIP (Center).
Formulation:	PBS containing 0.09% (W/V) Sodium Azide as preservative State: Aff - Purified State: Liquid purified Ig fraction
Concentration:	lot specific
Purification:	Protein A column, followed by peptide affinity purification
Conjugation:	Unconjugated
Storage:	Store undiluted at 2-8°C for one month or (in aliquots) at -20°C for longer. Avoid repeated freezing and thawing.
Stability:	Shelf life: one year from despatch.
Gene Name:	KN motif and ankyrin repeat domains 2
Database Link:	<a href="#">Entrez Gene 25959 Human Q63ZY3</a>
Background:	ANKRD25 contains 5 ANK repeats. It is strongly expressed in cervix, colon, heart, kidney and lung.
Synonyms:	SRC1-interacting protein, ANKRD25, KIAA1518, MXRA3
Note:	<b>Molecular Weight:</b> 91174 Da



[View online »](#)

**Product images:**

Western blot analysis of KANK2 / SIP Antibody (Center) in HL-60 cell line lysates (35ug/lane). This demonstrates the KANK2 antibody detected the KANK2 protein (arrow).