

## Product datasheet for **AP52284PU-N**

### **KIAA1609 (TLDC1) (C-term) Rabbit Polyclonal Antibody**

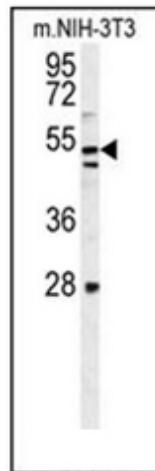
#### **Product data:**

Product Type:	Primary Antibodies
Applications:	FC, IHC, WB
Recommended Dilution:	<b>ELISA:</b> 1/1000. <b>Western Blot:</b> 1/100-1/500. <b>Flow Cytometry:</b> 1/10-1/50. <b>Immunohistochemistry on Paraffin Sections:</b> 1/10-1/50.
Reactivity:	Human, Mouse
Host:	Rabbit
Isotype:	Ig
Clonality:	Polyclonal
Immunogen:	KLH conjugated synthetic peptide between 433-464 amino acids from the C-terminal region of human KIAA1609
Specificity:	This antibody recognizes Human and Mouse KIAA1609 (C-term).
Formulation:	PBS containing 0.09% (W/V) Sodium Azide as preservative State: Aff - Purified State: Liquid purified Ig fraction
Concentration:	lot specific
Purification:	Protein A column, followed by peptide affinity purification
Conjugation:	Unconjugated
Storage:	Store undiluted at 2-8°C for one month or (in aliquots) at -20°C for longer. Avoid repeated freezing and thawing.
Stability:	Shelf life: one year from despatch.
Gene Name:	TBC/LysM-associated domain containing 1
Database Link:	<a href="#">Entrez Gene 57707 Human Q6P9B6</a>
Synonyms:	KIAA1609
Note:	<b>Molecular Weight:</b> 50994 Da

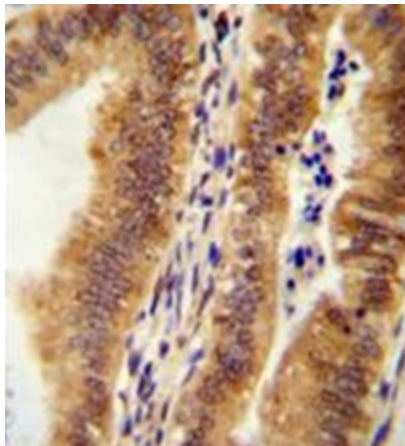


[View online »](#)

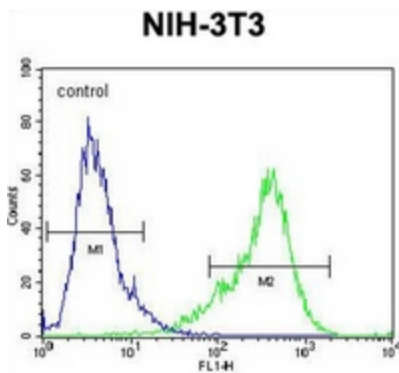
**Product images:**



Western blot analysis of KIAA1609 Antibody (C-term) in mouse NIH-3T3 cell line lysates (35ug/lane).



Immunohistochemistry analysis in formalin fixed and paraffin embedded human uterus tissue reacted with KIAA1609 Antibody (C-term), which was peroxidase conjugated to the secondary antibody and followed by AB staining.



Flow cytometric analysis of NIH-3T3 cells using KIAA1609 Antibody (C-term) (right histogram) compared to a negative control cell (left histogram). FITC-conjugated goat-anti-rabbit secondary antibodies were used for the analysis.