

Product datasheet for **AP52279PU-N**

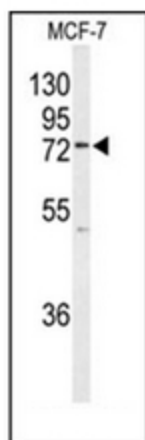
UFL1 (Center) Rabbit Polyclonal Antibody

Product data:

Product Type:	Primary Antibodies
Applications:	WB
Recommended Dilution:	ELISA: 1/1000. Western Blot: 1/100-1/500.
Reactivity:	Human
Host:	Rabbit
Isotype:	Ig
Clonality:	Polyclonal
Immunogen:	KLH conjugated synthetic peptide between 433~463 amino acids from the C-terminal region of human KIAA0776 / UFL1
Specificity:	This antibody recognizes Human KIAA0776 / UFL1 (Center).
Formulation:	PBS containing 0.09% (W/V) Sodium Azide as preservative State: Aff - Purified State: Liquid purified Ig fraction
Concentration:	lot specific
Purification:	Protein A column, followed by peptide affinity purification
Conjugation:	Unconjugated
Storage:	Store undiluted at 2-8°C for one month or (in aliquots) at -20°C for longer. Avoid repeated freezing and thawing.
Stability:	Shelf life: one year from despatch.
Gene Name:	UFM1 specific ligase 1
Database Link:	Entrez Gene 23376 Human O94874
Synonyms:	E3 UFM1-protein ligase 1
Note:	Molecular Weight: 89595 Da



[View online »](#)

Product images:

Western blot analysis of KIAA0776 / UFL1 Antibody (Center) in MCF-7 cell line lysates (35ug/lane).