

Product datasheet for **AP52278PU-N**

SEL1L3 (N-term) Rabbit Polyclonal Antibody

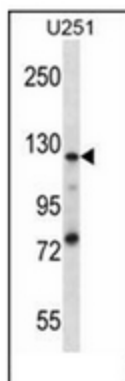
Product data:

Product Type:	Primary Antibodies
Applications:	FC, WB
Recommended Dilution:	ELISA: 1/1000. Western Blot: 1/100-1/500. Flow Cytometry: 1/10-1/50.
Reactivity:	Human
Host:	Rabbit
Isotype:	Ig
Clonality:	Polyclonal
Immunogen:	KLH conjugated synthetic peptide between 260-290 amino acids from the N-terminal region of Human SEL1L3 / KIAA0746
Specificity:	This antibody recognizes Human SEL1L3 / KIAA0746 (N-term).
Formulation:	PBS containing 0.09% (W/V) Sodium Azide as preservative State: Aff - Purified State: Liquid purified Ig fraction
Concentration:	lot specific
Purification:	Purified through a protein A column, followed by peptide affinity purification
Conjugation:	Unconjugated
Storage:	Store undiluted at 2-8°C for one month or (in aliquots) at -20°C for longer. Avoid repeated freezing and thawing.
Stability:	Shelf life: one year from despatch.
Gene Name:	SEL1L family member 3
Database Link:	Entrez Gene 23231 Human Q68CR1
Synonyms:	Sel-1L3
Note:	Molecular Weight: 128567 Da
Protein Families:	Transmembrane

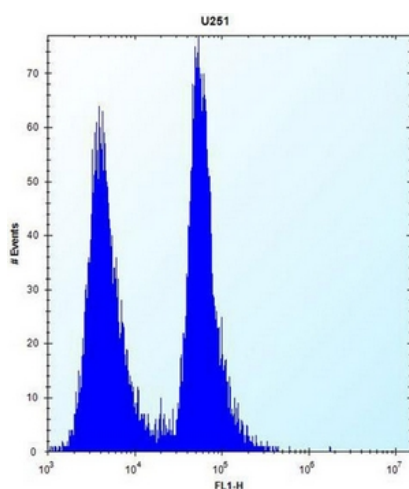


[View online »](#)

Product images:



Western blot analysis of SEL1L3 / KIAA0746 Antibody (N-term) in U251 cell line lysates (35ug/lane).



Flow cytometric analysis of U251 cells using SEL1L3 / KIAA0746 Antibody (N-term) (right histogram) compared to a negative control cell (left histogram). FITC-conjugated goat-anti-rabbit secondary antibodies were used for the analysis.